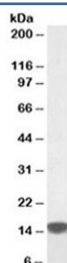


S100A9 Antibody (R33659)

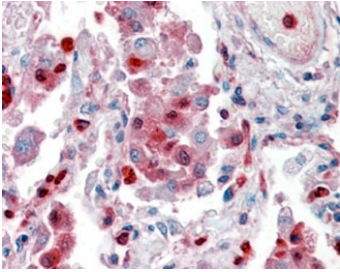
Catalog No.	Formulation	Size
R33659-100UG	0.5 mg/ml in 1X TBS, pH7.3, with 0.5% BSA (US sourced) and 0.02% sodium azide	100 ug

[Bulk quote request](#)

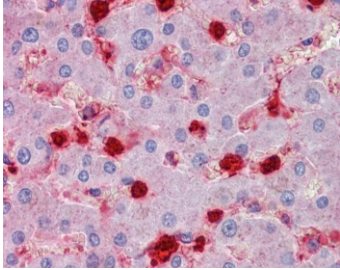
Availability	1-3 business days
Species Reactivity	Human
Format	Antigen affinity purified
Host	Goat
Clonality	Polyclonal (goat origin)
Isotype	Goat Ig
Purity	Antigen affinity
Gene ID	6280
Localization	Cytoplasmic
Applications	Western Blot : 0.5-2ug/ml Immunohistochemistry (FFPE) : 2-4ug/ml ELISA (peptide) LOD : 1:8000
Limitations	This S100A9 antibody is available for research use only.



Western blot testing of human peripheral mononucleocytes lysate with S100A9 antibody at 0.5ug/ml. Predicted molecular weight ~13 kDa, routinely observed at 13~16 kDa.



IHC staining of FFPE human lung with S100A9 antibody at 2.5ug/ml. HIER: steamed with pH6 citrate buffer, AP-staining.



IHC staining of FFPE human liver with S100A9 antibody at 2.5ug/ml. HIER: steamed with pH6 citrate buffer, AP-staining.

Description

Additional name(s) for this target protein: S100 calcium binding protein A9, Calprotectin L1H subunit , MRP14, Calgranulin B

Application Notes

Optimal dilution of the S100A9 antibody should be determined by the researcher.

Immunogen

Amino acids DTNADKQLSFEEF were used as the immunogen for this S100A9 antibody.

Storage

Aliquot and store the S100A9 antibody at -20oC.

Alternate Names

Calprotectin L1H subunit , MRP14, Calgranulin B