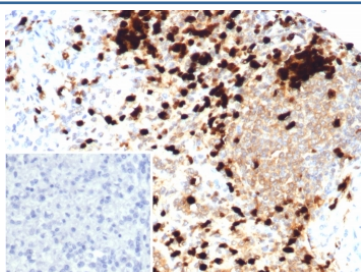


## S100A9 Antibody / MRP14 [clone S100A9/7550] (V4697)

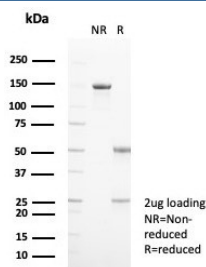
Catalog No.	Formulation	Size
V4697-100UG	0.2 mg/ml in 1X PBS with 0.1 mg/ml BSA (US sourced), 0.05% sodium azide	100 ug
V4697-20UG	0.2 mg/ml in 1X PBS with 0.1 mg/ml BSA (US sourced), 0.05% sodium azide	20 ug
V4697SAF-100UG	1 mg/ml in 1X PBS; BSA free, sodium azide free	100 ug

[Bulk quote request](#)

<b>Availability</b>	1-3 business days
<b>Species Reactivity</b>	Human
<b>Format</b>	Purified
<b>Clonality</b>	Monoclonal (mouse origin)
<b>Isotype</b>	Mouse IgG2, kappa
<b>Clone Name</b>	S100A9/7550
<b>Purity</b>	Protein A/G affinity
<b>UniProt</b>	P06702
<b>Localization</b>	Cytoplasm, Extracellular, Cell Surface
<b>Applications</b>	Immunohistochemistry (FFPE) : 1-2ug/ml for 30 min at RT
<b>Limitations</b>	This S100A9 antibody is available for research use only.



IHC staining of FFPE human spleen tissue with S100A9 antibody (clone S100A9/7550). Inset: PBS used in place of primary Ab (secondary Ab negative control). HIER: boil tissue sections in pH 9 10mM Tris with 1mM EDTA for 20 min and allow to cool before testing.



SDS-PAGE analysis of purified, BSA-free S100A9 antibody (clone S100A9/7550) as confirmation of integrity and purity.

## Description

This mAb stains the cytoplasm of macrophages and histiocytes in hematopoietic organs, Kupffer s cells of the liver and Langerhan s cells of the skin. It also stains the mantle zone B-lymphocytes of the lymph node and spleen, spermatogonia, and chief cells of the stomach. S100A9 is expressed by macrophages in acutely inflamed tissues and in chronic inflammation. It is detected in peripheral blood leukocytes, in neutrophils and granulocytes. It is present at sites of vascular inflammation. S100A9 is also expressed in epithelial cells constitutively or induced during dermatoses. S100A9 is a Calcium-binding protein. It has antimicrobial activity towards bacteria and fungi. It is important for resistance to invasion by pathogenic bacteria. It up-regulates transcription of genes that are under the control of NF-kappa-B. S100A9 plays a role in the development of endotoxic shock in response to bacterial lipopolysaccharide (LPS). It promotes tubulin polymerization when unphosphorylated. It also promotes phagocyte migration and infiltration of granulocytes at sites of wounding. It plays a role as a pro-inflammatory mediator in acute and chronic inflammation and up-regulates the release of IL8 and cell-surface expression of ICAM1.

## Application Notes

Optimal dilution of the S100A9 antibody should be determined by the researcher.

## Immunogen

A recombinant partial protein sequence (within amino acids 1-100) from the human protein was used as the immunogen for the S100A9 antibody.

## Storage

Aliquot the S100A9 antibody and store frozen at -20oC or colder. Avoid repeated freeze-thaw cycles.