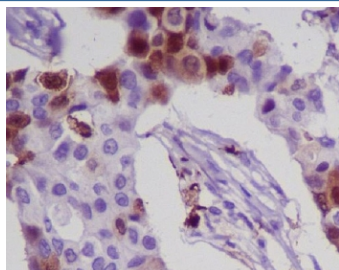


S100A8 Antibody [clone CFC-19] (RQ5104)

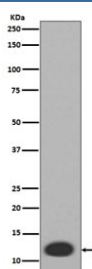
Catalog No.	Formulation	Size
RQ5104	Antibody in PBS with 0.02% sodium azide, 50% glycerol and 0.4-0.5mg/ml BSA	100 ul

[Bulk quote request](#)

Availability	1-2 weeks
Species Reactivity	Human
Format	Purified
Clonality	Rabbit Monoclonal
Isotype	Rabbit IgG
Clone Name	CFC-19
Purity	Affinity purified
UniProt	P05109
Localization	Cytoplasmic
Applications	Western Blot : 1:500-1:2000 Immunohistochemistry (FFPE) : 1:50-1:200
Limitations	This S100A8 antibody is available for research use only.



IHC staining of FFPE human breast cancer with S100A8 antibody. HIER: boil tissue sections in pH6, 10mM citrate buffer, for 10-20 min and allow to cool before testing.



Western blot testing of human HL60 cell lysate with S100A8 antibody. Predicted molecular weight ~11 kDa.

Description

The protein encoded by this gene is a member of the S100 family of proteins containing 2 EF-hand calcium-binding motifs. S100 proteins are localized in the cytoplasm and/or nucleus of a wide range of cells, and involved in the regulation of a number of cellular processes such as cell cycle progression and differentiation. S100 genes include at least 13 members which are located as a cluster on chromosome 1q21. This protein may function in the inhibition of casein kinase and as a cytokine. [RefSeq]

Application Notes

Optimal dilution of the S100A8 antibody should be determined by the researcher.

Immunogen

A synthetic peptide specific to human S100A8 was used as the immunogen for the S100A8 antibody.

Storage

Store the S100A8 antibody at -20oC.