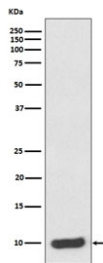


S100A6 Antibody [clone AOBG-19] (RQ5155)

Catalog No.	Formulation	Size
RQ5155	Antibody in PBS with 0.02% sodium azide, 50% glycerol and 0.4-0.5mg/ml BSA	100 ul

[Bulk quote request](#)

Availability	1-2 weeks
Species Reactivity	Human
Format	Purified
Host	Rabbit
Clonality	Rabbit Monoclonal
Isotype	Rabbit IgG
Clone Name	AOBG-19
Purity	Affinity purified
UniProt	P06703
Applications	Western Blot : 1:500-1:2000
Limitations	This S100A6 antibody is available for research use only.



Western blot testing of human HeLa cell lysate with S100A6 antibody. Predicted molecular weight ~10 kDa.

Description

The protein encoded by this gene is a member of the S100 family of proteins containing 2 EF-hand calcium-binding motifs. S100 proteins are localized in the cytoplasm and/or nucleus of a wide range of cells, and involved in the regulation of a number of cellular processes such as cell cycle progression and differentiation. S100 genes include at least 13 members which are located as a cluster on chromosome 1q21. This protein may function in stimulation of Ca²⁺-dependent insulin release, stimulation of prolactin secretion, and exocytosis. Chromosomal rearrangements and altered expression of this gene have been implicated in melanoma. [RefSeq]

Application Notes

Optimal dilution of the S100A6 antibody should be determined by the researcher.

Immunogen

A synthetic peptide specific to human S100 alpha 6 / S100A6 was used as the immunogen for the S100A6 antibody.

Storage

Store the S100A6 antibody at -20oC.