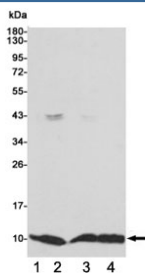


S100A6 Antibody [clone 3E11-E9-D8] (F54058)

Catalog No.	Formulation	Size
F54058-0.1ML	In PBS with 50% glycerol and 0.03% ProClin 300	0.1 ml

[Bulk quote request](#)

Availability	1-3 business days
Species Reactivity	Human, Monkey
Format	Purified
Host	Mouse
Clonality	Monoclonal (mouse origin)
Isotype	Mouse IgG1
Clone Name	3E11-E9-D8
Purity	Protein G affinity
UniProt	P06703
Applications	Western Blot : 1:1000
Limitations	This S100A6 antibody is available for research use only.



Western blot testing of 1) monkey COS7, 2) human MCF7, 3) human HCT116 and 4) human A549 cell lysates using S100A6 antibody 1:1000. Predicted molecular weight ~10 kDa.

Description

May function as calcium sensor and modulator, contributing to cellular calcium signaling. May function by interacting with other proteins, such as TPR-containing proteins, and indirectly play a role in many physiological processes such as the reorganization of the actin cytoskeleton and in cell motility. [UniProt]

Application Notes

The stated application concentrations are suggested starting points. Titration of the S100A6 antibody may be required

due to differences in protocols and secondary/substrate sensitivity.

Immunogen

A human recombinant protein was used as the immunogen for this S100A6 antibody.

Storage

Store the S100A6 antibody at -20°C.