

## S100A4 Antibody (R33285)

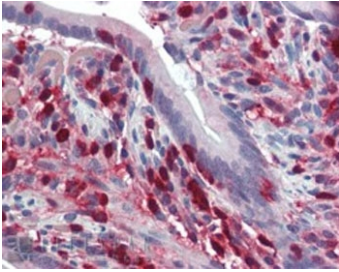
Catalog No.	Formulation	Size
R33285-100UG	0.5 mg/ml in 1X TBS, pH7.3, with 0.5% BSA (US sourced) and 0.02% sodium azide	100 ug

[Bulk quote request](#)

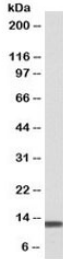
Availability	1-3 business days
Species Reactivity	Human
Predicted Reactivity	Mouse, Rat, Dog
Format	Antigen affinity purified
Host	Goat
Clonality	Polyclonal (goat origin)
Isotype	Goat Ig
Purity	Antigen affinity
Gene ID	6275
Localization	Cytoplasmic, nuclear
Applications	Western Blot : 0.03-0.1ug/ml Immunohistochemistry (FFPE) : 2-3ug/ml ELISA (peptide) LOD : 1:128000
Limitations	This S100A4 antibody is available for research use only.



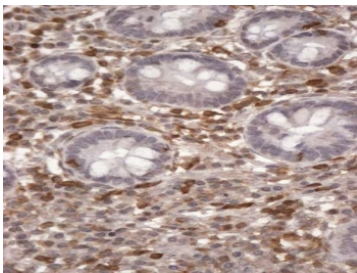
Western blot testing of human placenta lysate with S100A4 antibody at 0.03ug/ml.  
Predicted molecular weight ~12 kDa.



IHC staining of FFPE human small intestine with S100A4 antibody at 2.5ug/ml. HIER: steamed with pH6 citrate buffer, AP-staining.



Western blot testing of human PBMC lysate with S100A4 antibody at 0.05ug/ml. Predicted molecular weight ~12 kDa.



IHC staining of FFPE human small intestine lymphatic cells with S100A4 antibody at 2ug/ml. HIER: steamed with pH6 citrate buffer, HRP-staining.

## Description

Additional name(s) for this target protein: S100 calcium binding protein A4

## Application Notes

Optimal dilution of the S100A4 antibody should be determined by the researcher.

## Immunogen

Amino acids CNEFFEGFPDKQP were used as the immunogen for this S100A4 antibody.

## Storage

Aliquot and store the S100A4 antibody at -20oC.