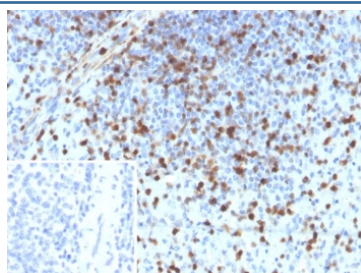


## S100A4 Antibody / FSP1 [clone S100A4/6796] (V5527)

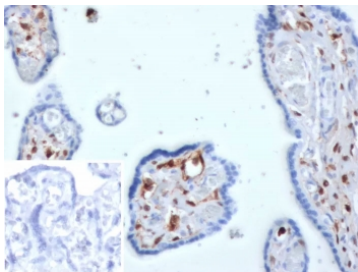
Catalog No.	Formulation	Size
V5527-100UG	0.2 mg/ml in 1X PBS with 0.1 mg/ml BSA (US sourced), 0.05% sodium azide	100 ug
V5527-20UG	0.2 mg/ml in 1X PBS with 0.1 mg/ml BSA (US sourced), 0.05% sodium azide	20 ug
V5527SAF-100UG	1 mg/ml in 1X PBS; BSA free, sodium azide free	100 ug

[Bulk quote request](#)

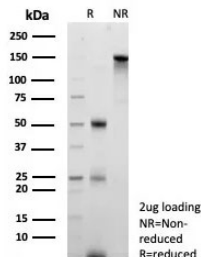
<b>Availability</b>	1-3 business days
<b>Species Reactivity</b>	Human
<b>Format</b>	Purified
<b>Host</b>	Mouse
<b>Clonality</b>	Monoclonal (mouse origin)
<b>Isotype</b>	Mouse IgG2c, kappa
<b>Clone Name</b>	S100A4/6796
<b>Purity</b>	Protein A/G affinity
<b>UniProt</b>	P26447
<b>Localization</b>	Nucleus, Cytoplasm
<b>Applications</b>	Immunohistochemistry (FFPE) : 1-2ug/ml
<b>Limitations</b>	This S100A4 antibody is available for research use only.



IHC staining of FFPE human spleen tissue with S100A4 antibody (clone S100A4/6796). Inset: PBS used in place of primary Ab (secondary Ab negative control). HIER: boil tissue sections in pH 9 10mM Tris with 1mM EDTA for 20 min and allow to cool before testing.



IHC staining of FFPE human placenta tissue with S100A4 antibody (clone S100A4/6796). Inset: PBS used in place of primary Ab (secondary Ab negative control).  
HIER: boil tissue sections in pH 9 10mM Tris with 1mM EDTA for 20 min and allow to cool before testing.



SDS-PAGE analysis of purified, BSA-free S100A4 antibody (clone S100A4/6796) as confirmation of integrity and purity.

## Description

S100A4 belongs to the S100 super-family of proteins containing 2 EF-hand calcium-binding domains. S100 genes include at least 25 members, including S100A1-S100A18, trichohyalin, filaggrin, repetin, S100P, and S100Z. S100A4 exerts its function via direct interaction with a number of proteins including P53, P63, non-muscle myosin IIA, α6β4 integrin, and liprin b1. S100A4 is overexpressed in highly metastatic cancers, which makes it useful as a marker of tumor progression.

## Application Notes

Optimal dilution of the S100A4 antibody should be determined by the researcher.

## Immunogen

A recombinant fragment (within amino acids 1-101) of human S100A4 protein was used as the immunogen for the S100A4 antibody.

## Storage

Aliquot the S100A4 antibody and store frozen at -20°C or colder. Avoid repeated freeze-thaw cycles.