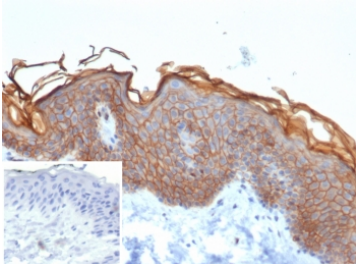


## S100A16 Antibody / Tumor Progression and Cell Proliferation Marker [clone S100A16/7412] (V4720)

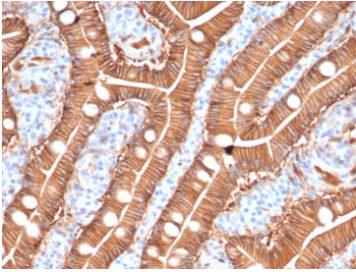
Catalog No.	Formulation	Size
V4720-100UG	0.2 mg/ml in 1X PBS with 0.1 mg/ml BSA (US sourced), 0.05% sodium azide	100 ug
V4720-20UG	0.2 mg/ml in 1X PBS with 0.1 mg/ml BSA (US sourced), 0.05% sodium azide	20 ug
V4720SAF-100UG	1 mg/ml in 1X PBS; BSA free, sodium azide free	100 ug

### Bulk quote request

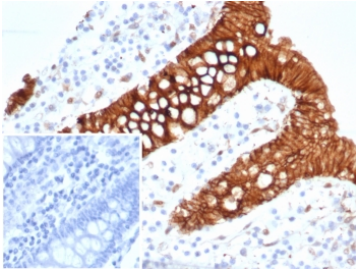
<b>Availability</b>	1-3 business days
<b>Species Reactivity</b>	Human
<b>Format</b>	Purified
<b>Host</b>	Mouse
<b>Clonality</b>	Monoclonal (mouse origin)
<b>Isotype</b>	Mouse IgG2, kappa
<b>Clone Name</b>	S100A16/7412
<b>Purity</b>	Protein A/G affinity
<b>UniProt</b>	Q96FQ6
<b>Localization</b>	Nucleus, Cytoplasm
<b>Applications</b>	Immunohistochemistry (FFPE) : 1-2ug/ml for 30 min at RT Western Blot : 2-4ug/ml
<b>Limitations</b>	This S100A16 Antibody / Tumor Progression and Cell Proliferation Marker is available for research use only.



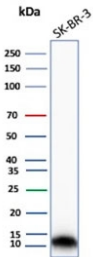
S100A16 Antibody Proliferative Epidermis IHC. Immunohistochemistry of S100 calcium binding protein A16 / S100A16 in FFPE human skin tissue using mouse monoclonal S100A16 antibody, clone S100A16/7412. HRP-DAB brown staining highlights prominent cytoplasmic and membranous labeling of keratinocytes within the epidermis, with increased intensity in basal and suprabasal layers consistent with proliferative and tumor-associated epithelial signaling, while the underlying dermis shows minimal staining and nuclei are counterstained blue. Inset: PBS was used in place of primary antibody as a negative control to confirm specificity of staining. Heat induced epitope retrieval was performed by boiling tissue sections in pH 9 10 mM Tris with 1 mM EDTA for 20 min followed by cooling prior to staining.



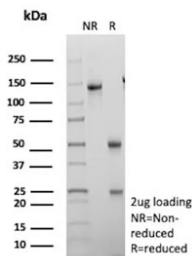
S100A16 Antibody Intestinal Proliferation IHC. Immunohistochemistry of S100 calcium binding protein A16 / S100A16 in FFPE human duodenum tissue using mouse monoclonal S100A16 antibody, clone S100A16/7412. HRP-DAB brown staining highlights strong cytoplasmic and apical membranous labeling of enterocytes lining villous structures, with prominent signal along the epithelial layer consistent with active cellular turnover and proliferation-associated expression, while the lamina propria shows minimal staining and nuclei are counterstained blue. Heat induced epitope retrieval was performed by boiling tissue sections in pH 9 10 mM Tris with 1 mM EDTA for 20 min followed by cooling prior to staining.



S100A16 Antibody Tumor Epithelium IHC. Immunohistochemistry of S100 calcium binding protein A16 / S100A16 in FFPE human colon carcinoma tissue using mouse monoclonal S100A16 antibody, clone S100A16/7412. HRP-DAB brown staining highlights strong cytoplasmic and membranous labeling of malignant epithelial cells forming glandular structures, with heterogeneous intensity consistent with tumor-associated proliferation and altered differentiation, while surrounding stromal elements show minimal staining and nuclei are counterstained blue. Inset: PBS was used in place of primary antibody as a negative control to confirm specificity of staining. Heat induced epitope retrieval was performed by boiling tissue sections in pH 9 10 mM Tris with 1 mM EDTA for 20 min followed by cooling prior to staining.



S100A16 Antibody Proliferation Marker WB. Western blot analysis of S100 calcium binding protein A16 / S100A16 in human SK-BR-3 cell lysate using S100A16 antibody, clone S100A16/7412. A band is detected at approximately 10-12 kDa, consistent with the predicted molecular weight of S100A16, supporting detection of this calcium-binding protein in proliferative epithelial-derived tumor cells.



SDS-PAGE analysis of purified, BSA-free S100A16 antibody (clone S100A16/7412) as confirmation of integrity and purity.

## Description

S100 calcium binding protein A16 (S100A16) is a member of the S100 protein family that plays a role in cellular signaling, proliferation, and tumor-associated processes. S100A16 Antibody / Tumor Progression and Cell Proliferation Marker (clone S100A16/7412) is used to investigate the involvement of S100A16 in cancer biology, where its expression has been linked to tumor growth and progression. S100A16 antibody, also referred to as S100 calcium binding protein A16 antibody in the literature, is frequently applied in studies of oncogenic signaling and epithelial tumor development.

S100A16 is expressed in epithelial tissues and has been implicated in regulating cell cycle progression and proliferation. Its expression is often elevated in certain tumor types, where it may contribute to increased cellular growth and altered differentiation. This dual role in both normal epithelial biology and tumor-associated processes makes S100A16 a versatile marker for studying cellular behavior in different biological contexts.

Functionally, S100A16 interacts with intracellular signaling pathways in a calcium-dependent manner, influencing protein interactions and downstream cellular responses. These interactions can impact cell proliferation, migration, and survival,

particularly in tumor environments where signaling pathways are frequently dysregulated.

In immunohistochemistry, S100A16 expression may be observed in tumor epithelial cells, where it can show cytoplasmic staining patterns consistent with its intracellular signaling role. Differences in expression intensity and distribution can provide insight into tumor progression and heterogeneity, supporting its use in cancer-related research.

Studies have suggested that S100A16 expression correlates with tumor progression, invasion, and metastatic potential in certain cancers. As a result, S100A16 antibody is commonly used in investigations of tumor biology, particularly in epithelial malignancies where alterations in differentiation and proliferation are key features of disease progression.

The mouse monoclonal clone S100A16/7412 antibody provides reliable detection of S100A16 in research applications. Its focus on tumor progression and proliferation makes it particularly useful for studies examining cancer development, signaling pathways, and cellular growth dynamics.

This antibody is part of a [broader antibody panel](#) offered by NSJ Bioreagents.

## Application Notes

Optimal dilution of the S100A16 Antibody / Tumor Progression and Cell Proliferation Marker should be determined by the researcher.

## Immunogen

A recombinant partial protein sequence (within amino acids 1-103) from the human protein was used as the immunogen for the S100A16 antibody.

## Storage

Aliquot the S100A16 antibody and store frozen at -20oC or colder. Avoid repeated freeze-thaw cycles.

## Alternate Names

S100A16 antibody, S100 calcium binding protein A16 antibody, S100A16 protein antibody, Tumor progression marker antibody, Cell proliferation regulator antibody