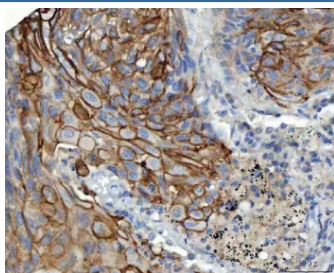


## S100A14 Antibody (RQ7528)

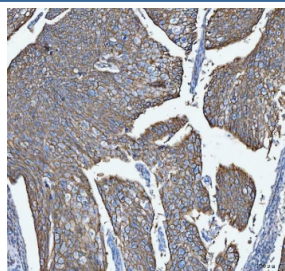
Catalog No.	Formulation	Size
RQ7528	0.5mg/ml if reconstituted with 0.2ml sterile DI water	100 ug

**Bulk quote request**

<b>Availability</b>	1-3 business days
<b>Species Reactivity</b>	Human
<b>Format</b>	Antigen affinity purified
<b>Clonality</b>	Polyclonal (rabbit origin)
<b>Isotype</b>	Rabbit IgG
<b>Purity</b>	Antigen affinity purified
<b>Buffer</b>	Lyophilized from 1X PBS with 2% Trehalose
<b>UniProt</b>	Q9HCY8
<b>Localization</b>	Cytoplasmic
<b>Applications</b>	Immunohistochemistry (FFPE) : 2-5ug/ml
<b>Limitations</b>	This S100A14 antibody is available for research use only.



IHC staining of FFPE human lung squamous cell carcinoma tissue with S100A14 antibody. HIER: boil tissue sections in pH8 EDTA for 20 min and allow to cool before testing.



IHC staining of FFPE human cervical squamous carcinoma tissue with S100A14 antibody. HIER: boil tissue sections in pH8 EDTA for 20 min and allow to cool before testing.

## Description

S100 calcium binding protein A14 (S100A14) is a protein that in humans is encoded by the S100A14 gene. This gene encodes a member of the S100 protein family which contains an EF-hand motif and binds calcium. The gene is located in a cluster of S100 genes on chromosome 1. Levels of the encoded protein have been found to be lower in cancerous tissue and associated with metastasis suggesting a tumor suppressor function.

## Application Notes

Optimal dilution of the S100A14 antibody should be determined by the researcher.

## Immunogen

Amino acids ELIGEAAKSVKLERPVRGH from the human protein were used as the immunogen for the S100A14 antibody.

## Storage

After reconstitution, the S100A14 antibody can be stored for up to one month at 4°C. For long-term, aliquot and store at -20°C. Avoid repeated freezing and thawing.