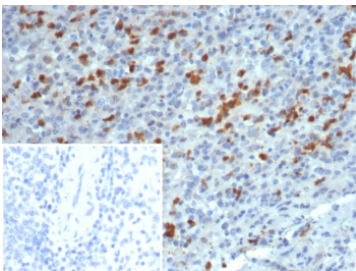


## S100A13 Antibody / S100 calcium-binding protein A13 [clone S100A13/7483] (V4736)

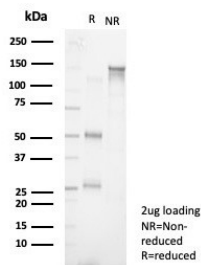
Catalog No.	Formulation	Size
V4736-100UG	0.2 mg/ml in 1X PBS with 0.1 mg/ml BSA (US sourced), 0.05% sodium azide	100 ug
V4736-20UG	0.2 mg/ml in 1X PBS with 0.1 mg/ml BSA (US sourced), 0.05% sodium azide	20 ug
V4736SAF-100UG	1 mg/ml in 1X PBS; BSA free, sodium azide free	100 ug

### Bulk quote request

<b>Availability</b>	1-3 business days
<b>Species Reactivity</b>	Human
<b>Format</b>	Purified
<b>Host</b>	Mouse
<b>Clonality</b>	Monoclonal (mouse origin)
<b>Isotype</b>	Mouse IgG2b, kappa
<b>Clone Name</b>	S100A13/7483
<b>Purity</b>	Protein A/G affinity
<b>UniProt</b>	Q99584
<b>Localization</b>	Cytoplasm, Nuclear, Plasma membrane, Secreted
<b>Applications</b>	Immunohistochemistry (FFPE) : 1-2ug/ml for 30 min at RT
<b>Limitations</b>	This S100A13 antibody is available for research use only.



IHC staining of FFPE human spleen tissue with S100A13 antibody (clone S100A13/7483). Inset: PBS used in place of primary Ab (secondary Ab negative control).  
 HIERS: boil tissue sections in pH 9 10mM Tris with 1mM EDTA for 20 min and allow to cool before testing.



SDS-PAGE analysis of purified, BSA-free S100A13 antibody (clone S100A13/7483) as confirmation of integrity and purity.

## Description

The S-100 protein family consists of a group of calcium-binding proteins, that exhibit cell and tissue-specific expression. The expression levels of its members differ in various pathological conditions. The extracellular functions of the S-100 family may include the ability to enhance neurite outgrowth, involvement in inflammation and motility of tumor cells. S-100A13 is a 98 amino acid protein with 2 EF-hand calcium-binding domains. High levels of S-100A13 mRNA are present in skeletal muscle, heart, kidney, ovary, small intestine and pancreas. S-100A13 translocates in response to elevated intracellular calcium levels induced by Angiotensin II. S-100A13 co-localizes with S-100A1 on human chromosome 1q21.3, the site where the majority of S-100 proteins cluster.

## Application Notes

Optimal dilution of the S100A13 antibody should be determined by the researcher.

## Immunogen

A recombinant partial protein sequence (within amino acids 1-93) from the human protein was used as the immunogen for the S100A13 antibody.

## Storage

Aliquot the S100A13 antibody and store frozen at -20oC or colder. Avoid repeated freeze-thaw cycles.