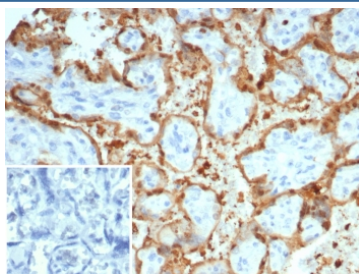


S100A12 Antibody / CGRP [clone S100A12/4514] (V4734)

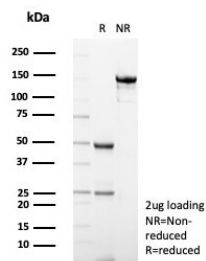
Catalog No.	Formulation	Size
V4734-100UG	0.2 mg/ml in 1X PBS with 0.1 mg/ml BSA (US sourced), 0.05% sodium azide	100 ug
V4734-20UG	0.2 mg/ml in 1X PBS with 0.1 mg/ml BSA (US sourced), 0.05% sodium azide	20 ug
V4734SAF-100UG	1 mg/ml in 1X PBS; BSA free, sodium azide free	100 ug

[Bulk quote request](#)

Availability	1-3 business days
Species Reactivity	Human
Format	Purified
Host	Mouse
Clonality	Monoclonal (mouse origin)
Isotype	Mouse IgG1, kappa
Clone Name	S100A12/4514
Purity	Protein A/G affinity
UniProt	P80511
Localization	Secreted
Applications	Immunohistochemistry (FFPE) : 1-2ug/ml for 30 min at RT
Limitations	This S100A12 antibody is available for research use only.



IHC staining of FFPE human placental tissue with S100A12 antibody (clone S100A12/4514). Inset: PBS used in place of primary Ab (secondary Ab negative control).
HIER: boil tissue sections in pH 9 10mM Tris with 1mM EDTA for 20 min and allow to cool before testing.



SDS-PAGE analysis of purified, BSA-free S100A12 antibody (clone S100A12/4514) as confirmation of integrity and purity.

Description

S100A12 (CGRP) is a calcium-, zinc- and copper-binding protein which plays a prominent role in the regulation of inflammatory processes and immune response. Its pro-inflammatory activity involves recruitment of leukocytes, promotion of cytokine and chemokine production, and regulation of leukocyte adhesion and migration.

Application Notes

Optimal dilution of the S100A12 antibody should be determined by the researcher.

Immunogen

A recombinant partial protein sequence (within amino acids 1-95) from the human protein was used as the immunogen for the S100A12 antibody.

Storage

Aliquot the S100A12 antibody and store frozen at -20oC or colder. Avoid repeated freeze-thaw cycles.