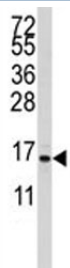


S100A11 Antibody (F48225)

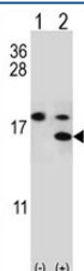
Catalog No.	Formulation	Size
F48225-0.4ML	In 1X PBS, pH 7.4, with 0.09% sodium azide	0.4 ml
F48225-0.08ML	In 1X PBS, pH 7.4, with 0.09% sodium azide	0.08 ml

[Bulk quote request](#)

Availability	1-3 business days
Species Reactivity	Human
Format	Antigen affinity purified
Host	Rabbit
Clonality	Polyclonal (rabbit origin)
Isotype	Rabbit Ig
Purity	Antigen affinity
UniProt	P31949
Applications	Western Blot : 1:1000
Limitations	This S100A11 antibody is available for research use only.



Western blot analysis of S100A11 antibody and CEM lysate. Predicted molecular weight 12~15 kDa.



Western blot analysis of S100A11 antibody and 293 cell lysate either nontransfected (Lane 1) or transiently transfected (2) with the S100A11 gene.

Description

S100A11 is a member of the S100 family of proteins containing 2 EF-hand calcium-binding motifs. S100 proteins are localized in the cytoplasm and/or nucleus of a wide range of cells, and involved in the regulation of a number of cellular processes such as cell cycle progression and differentiation. This protein may function in motility, invasion, and tubulin polymerization. Chromosomal rearrangements and altered expression of S100A11 gene have been implicated in tumor metastasis.

Application Notes

Titration of the S100A11 antibody may be required due to differences in protocols and secondary/substrate sensitivity.

Immunogen

A portion of amino acids 1-30 from the human protein was used as the immunogen for this S100A11 antibody.

Storage

Aliquot the S100A11 antibody and store frozen at -20oC or colder. Avoid repeated freeze-thaw cycles.