

S100A1 Antibody [clone S1-61] (V3393)

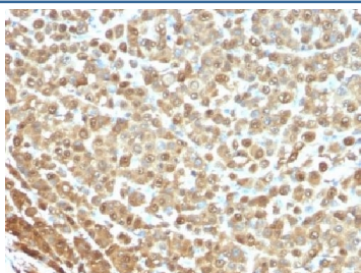
Catalog No.	Formulation	Size
V3393-100UG	0.2 mg/ml in 1X PBS with 0.1 mg/ml BSA (US sourced) and 0.05% sodium azide	100 ug
V3393-20UG	0.2 mg/ml in 1X PBS with 0.1 mg/ml BSA (US sourced) and 0.05% sodium azide	20 ug
V3393SAF-100UG	1 mg/ml in 1X PBS; BSA free, sodium azide free	100 ug



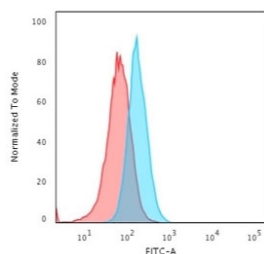
Citations (4)

[Bulk quote request](#)

Availability	1-3 business days
Species Reactivity	Human
Format	Purified
Clonality	Monoclonal (mouse origin)
Isotype	Mouse IgG1, kappa
Clone Name	S1-61
Purity	Protein G affinity chromatography
UniProt	P23297
Localization	Cytoplasmic
Applications	Flow Cytometry : 1-2ug/10 ⁶ cells Immunohistochemistry (FFPE) : 1-2ug/ml for 30 min at RT
Limitations	This S100A1 antibody is available for research use only.



IHC testing of FFPE human melanoma stained with S100A1 antibody (clone S1-61). Required HIER: boil tissue sections in 10mM citrate buffer, pH 6, for 10-20 min followed by cooling at RT for 20 min.



Flow cytometry testing of fixed and permeabilized human T98G cells with S100A1 antibody (clone S1-61); Red=isotype control, Blue= S100A1 antibody.

Description

S100 belongs to the family of calcium binding proteins. S100A and S100B proteins are two members of the S100 family. S100A is composed of an alpha and beta chain whereas S100B is composed of two beta chains. S100 protein has been found in normal melanocytes, Langerhans cells, histiocytes, chondrocytes, lipocytes, skeletal and cardiac muscle, Schwann cells, epithelial and myoepithelial cells of the breast, salivary and sweat glands, as well as in glial cells. Neoplasms derived from these cells also express S100 protein, albeit non-uniformly. A large number of well-differentiated tumors of the salivary gland, adipose and cartilaginous tissue, and Schwann cell-derived tumors express S100 protein. Almost all malignant melanomas and cases of histiocytosis X are positive for S100 protein. Despite the fact that S100 protein is an ubiquitous substance, its demonstration is of great value in the identification of several neoplasms, particularly melanomas and their metastases.

Application Notes

The optimal dilution of the S100A1 antibody for each application should be determined by the researcher.

Immunogen

Purified human S100 protein was used as the immunogen for this S100A1 antibody.

Storage

Store the S100A1 antibody at 2-8°C (with azide) or aliquot and store at -20°C or colder (without azide).