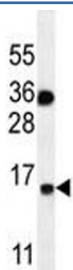


## S100A1 Antibody (F41686)

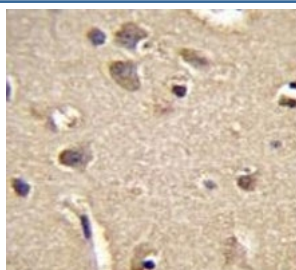
Catalog No.	Formulation	Size
F41686-0.4ML	In 1X PBS, pH 7.4, with 0.09% sodium azide	0.4 ml
F41686-0.08ML	In 1X PBS, pH 7.4, with 0.09% sodium azide	0.08 ml

[Bulk quote request](#)

<b>Availability</b>	1-3 business days
<b>Species Reactivity</b>	Human
<b>Predicted Reactivity</b>	Bovine
<b>Format</b>	Antigen affinity purified
<b>Host</b>	Rabbit
<b>Clonality</b>	Polyclonal (rabbit origin)
<b>Isotype</b>	Rabbit Ig
<b>Purity</b>	Antigen affinity
<b>UniProt</b>	P23297
<b>Applications</b>	Western Blot : 1:1000 IHC (Paraffin) : 1:50-1:100
<b>Limitations</b>	This S100A1 antibody is available for research use only.



S100A1 antibody western blot analysis in MDA-MB435 lysate. Predicted molecular weight: 12-15 kDa.



S100A1 antibody immunohistochemistry analysis in formalin fixed and paraffin embedded human brain tissue.

## Description

The protein encoded by this gene is a member of the S100 family of proteins containing 2 EF-hand calcium-binding motifs. S100 proteins are localized in the cytoplasm and/or nucleus of a wide range of cells, and involved in the regulation of a number of cellular processes such as cell cycle progression and differentiation. S100 genes include at least 13 members which are located as a cluster on chromosome 1q21. This protein may function in stimulation of Ca<sup>2+</sup>-induced Ca<sup>2+</sup> release, inhibition of microtubule assembly, and inhibition of protein kinase C-mediated phosphorylation. Reduced expression of this protein has been implicated in cardiomyopathies.

## Application Notes

Titration of the S100A1 antibody may be required due to differences in protocols and secondary/substrate sensitivity.

## Immunogen

A portion of amino acids 45-75 from the human protein was used as the immunogen for this S100A1 antibody.

## Storage

Aliquot the S100A1 antibody and store frozen at -20°C or colder. Avoid repeated freeze-thaw cycles.