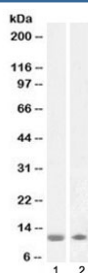


S100 beta Antibody (R36444)

Catalog No.	Formulation	Size
R36444-100UG	0.5 mg/ml in 1X TBS, pH7.3, with 0.5% BSA (US sourced) and 0.02% sodium azide	100 ug

[Bulk quote request](#)

Availability	1-3 business days
Species Reactivity	Human
Format	Antigen affinity purified
Host	Goat
Clonality	Polyclonal (goat origin)
Isotype	Goat Ig
Purity	Antigen affinity
UniProt	P04271
Applications	Western Blot : 1-3ug/ml ELISA (peptide) : 1:32000
Limitations	This S100 beta antibody is available for research use only.



Western blot testing of human 1) olfactory bulb and 2) cerebellum lysate with S100 beta antibody at 1ug/ml. Predicted molecular weight ~11 kDa.

Description

Additional name(s) for this target protein: S100 calcium binding protein B; S100B

Application Notes

The stated application concentrations are suggested starting points. Titration of the S100 beta antibody may be required due to differences in protocols and secondary/substrate sensitivity.

Immunogen

Amino acids SHFLEEIKEQEVVD were used as the immunogen for this S100 beta antibody.

Storage

Aliquot and store the S100 beta antibody at -20oC.