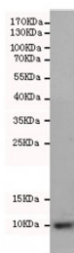


S100 beta Antibody [clone 5G3-C11] (F54011)

Catalog No.	Formulation	Size
F54011-0.1ML	In PBS with 50% glycerol and 0.03% ProClin 300	0.1 ml

Bulk quote request

Availability	1-3 business days
Species Reactivity	Rat
Predicted Reactivity	Human
Format	Purified
Clonality	Monoclonal (mouse origin)
Isotype	Mouse IgG2b
Clone Name	5G3-C11
Purity	Protein G affinity
UniProt	P04271
Applications	Western Blot : 1:500
Limitations	This S100 beta antibody is available for research use only.



Western blot testing of rat brain lysate with S100 beta antibody at 1:500 diluted.
Predicted molecular weight ~11 kDa.

Description

Weakly binds calcium but binds zinc very tightly-distinct binding sites with different affinities exist for both ions on each monomer. Physiological concentrations of potassium ion antagonize the binding of both divalent cations, especially affecting high-affinity calcium-binding sites. Binds to and initiates the activation of STK38 by releasing autoinhibitory intramolecular interactions within the kinase. Interaction with AGER after myocardial infarction may play a role in myocyte apoptosis by activating ERK1/2 and p53/TP53 signaling. Could assist ATAD3A cytoplasmic processing, preventing aggregation and favoring mitochondrial localization. May mediate calcium-dependent regulation on many physiological processes by interacting with other proteins, such as TPR-containing proteins, and modulating their activity.

Application Notes

The stated application concentrations are suggested starting points. Titration of the S100 beta antibody may be required due to differences in protocols and secondary/substrate sensitivity.

Immunogen

A S100B synthetic peptide was used as the immunogen for this S100 beta antibody.

Storage

Store the S100 beta antibody at -20oC.