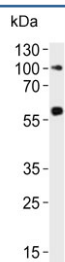


## RYK Antibody (F54254)

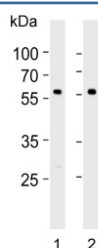
Catalog No.	Formulation	Size
F54254-0.4ML	In 1X PBS, pH 7.4, with 0.09% sodium azide	0.4 ml
F54254-0.08ML	In 1X PBS, pH 7.4, with 0.09% sodium azide	0.08 ml

[Bulk quote request](#)

<b>Availability</b>	1-3 business days
<b>Species Reactivity</b>	Human, Mouse
<b>Format</b>	Purified
<b>Clonality</b>	Polyclonal (rabbit origin)
<b>Isotype</b>	Rabbit Ig
<b>Purity</b>	Antigen affinity purified
<b>UniProt</b>	P34925
<b>Gene ID</b>	6259
<b>Applications</b>	Western Blot : 1:1000 Immunohistochemistry (FFPE) : 1:50-1:100
<b>Limitations</b>	This RYK antibody is available for research use only.



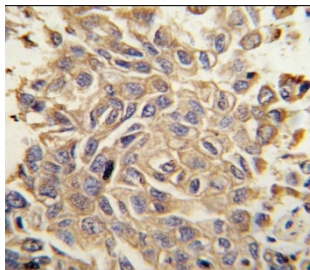
Western blot testing of human ovary lysate with RYK antibody. Predicted molecular weight ~68 kDa.



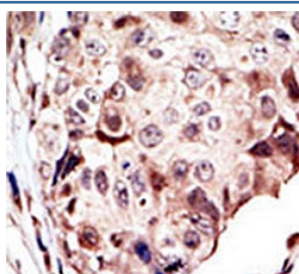
Western blot testing of mouse 1) lung and 2) ovary lysate with RYK antibody. Predicted molecular weight ~68 kDa.

kDa  
130-  
100-  
70-  
55-  
35-  
25-  
15-

Western blot testing of mouse NIH 3T3 cell lysate with RYK antibody. Predicted molecular weight ~68 kDa.



IHC testing of FFPE human lung carcinoma with RYK antibody. HIER: steam section in pH6 citrate buffer for 20 min and allow to cool prior to staining.



IHC testing of FFPE human breast cancer with RYK antibody. HIER: steam section in pH6 citrate buffer for 20 min and allow to cool prior to staining.

## Description

RYK is an atypical member of the family of growth factor receptor protein tyrosine kinases, differing from other members at a number of conserved residues in the activation and nucleotide binding domains. This gene product belongs to a subfamily whose members do not appear to be regulated by phosphorylation in the activation segment. It has been suggested that mediation of biological activity by recruitment of a signaling-competent auxiliary protein may occur through an as yet uncharacterized mechanism. A nine nucleotide insertion in some transcripts results in the SLG variant. It is not established whether this is a product of alternative splicing or a second gene, since evidence for a second gene or pseudogene on chromosome 17 exists.

## Application Notes

The stated application concentrations are suggested starting points. Titration of the RYK antibody may be required due to differences in protocols and secondary/substrate sensitivity.

## Immunogen

A portion of amino acids 160-190 from the human protein were used as the immunogen for the RYK antibody.

## Storage

Aliquot the RYK antibody and store frozen at -20oC or colder. Avoid repeated freeze-thaw cycles.

