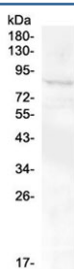


## RXFP2 Antibody / Relaxin Receptor 2 (RQ4608)

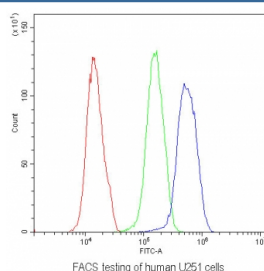
Catalog No.	Formulation	Size
RQ4608	0.5mg/ml if reconstituted with 0.2ml sterile DI water	100 ug

**Bulk quote request**

<b>Availability</b>	1-3 business days
<b>Species Reactivity</b>	Human
<b>Format</b>	Antigen affinity purified
<b>Clonality</b>	Polyclonal (rabbit origin)
<b>Isotype</b>	Rabbit IgG
<b>Purity</b>	Antigen affinity purified
<b>Buffer</b>	Lyophilized from 1X PBS with 2% Trehalose and 0.025% sodium azide
<b>UniProt</b>	Q8WXD0
<b>Applications</b>	Western Blot : 0.5-1ug/ml Flow Cytometry : 1-3ug/10 <sup>6</sup> cells
<b>Limitations</b>	This RXFP2 antibody is available for research use only.



Western blot testing of human SHG-44 cell lysate with RXFP2 antibody at 0.5ug/ml. Predicted molecular weight ~86 kDa.



Flow cytometry testing of human U251 cells with RXFP2 antibody at 1ug/10<sup>6</sup> cells (blocked with goat sera); Red=cells alone, Green=isotype control, Blue= RXFP2 antibody.

## Description

Relaxin/insulin-like family peptide receptor 2, also known as RXFP2, is a human G-protein coupled receptor. It is mapped to 13q13.1. This gene encodes a member of the GPCR (G protein-coupled, 7-transmembrane receptor) family. Mutations in this gene are associated with cryptorchidism. Alternatively spliced transcript variants encoding different isoforms have been found for this gene.

## Application Notes

Optimal dilution of the RXFP2 antibody should be determined by the researcher.

## Immunogen

Amino acids MIVFLVFKHLFSLRLITMFFLLHFIVLINVKDFALTQ were used as the immunogen for the RXFP2 antibody.

## Storage

After reconstitution, the RXFP2 antibody can be stored for up to one month at 4°C. For long-term, aliquot and store at -20°C. Avoid repeated freezing and thawing.