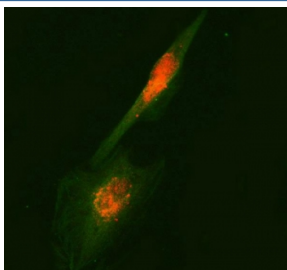


## RUFY2 Antibody / RUN and FYVE domain-containing protein 2 (RQ7920)

Catalog No.	Formulation	Size
RQ7920	0.5mg/ml if reconstituted with 0.2ml sterile DI water	100 ug

[Bulk quote request](#)

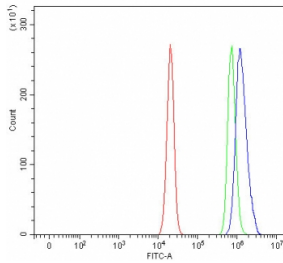
<b>Availability</b>	1-3 business days
<b>Species Reactivity</b>	Human
<b>Format</b>	Antigen affinity purified
<b>Host</b>	Rabbit
<b>Clonality</b>	Polyclonal (rabbit origin)
<b>Isotype</b>	Rabbit IgG
<b>Purity</b>	Antigen affinity purified
<b>Buffer</b>	Lyophilized from 1X PBS with 2% Trehalose
<b>UniProt</b>	Q8WXA3
<b>Applications</b>	Western Blot : 0.5-1ug/ml Immunofluorescence (FFPE) : 5ug/ml Flow Cytometry : 1-3ug/million cells Direct ELISA : 0.1-0.5ug/ml
<b>Limitations</b>	This RUFY2 antibody is available for research use only.



Immunofluorescent staining of FFPE human U-87 MG cells with RUFY2 antibody (red) and Beta Tubulin mAb (green). HIER: steam section in pH6 citrate buffer for 20 min.



Western blot testing of human 1) PC-3 and 2) U-251 cell lysate with RUFY2 antibody.  
Predicted molecular weight ~70 kDa.



Flow cytometry testing of human U-2 OS cells with RUFY2 antibody at 1ug/million cells (blocked with goat sera); Red=cells alone, Green=isotype control, Blue= RUFY2 antibody.

## Description

RUN and FYVE domain containing 2 (RUFY2) is a protein that in humans is encoded by the RUFY2 gene. Enables SH3 domain binding activity. Predicted to be involved in regulation of endocytosis. Located in cytoplasm.

## Application Notes

Optimal dilution of the RUFY2 antibody should be determined by the researcher.

## Immunogen

E. coli-derived recombinant human protein (amino acids E239-K551) was used as the immunogen for the RUFY2 antibody.

## Storage

After reconstitution, the RUFY2 antibody can be stored for up to one month at 4oC. For long-term, aliquot and store at -20oC. Avoid repeated freezing and thawing.