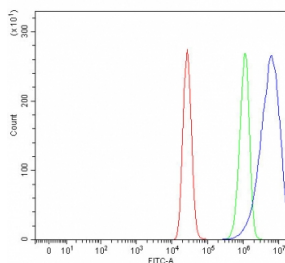


## RUFY1 Antibody / RUN and FYVE domain-containing protein 1 (RQ8402)

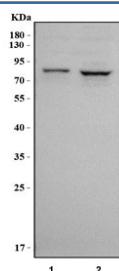
Catalog No.	Formulation	Size
RQ8402	0.5mg/ml if reconstituted with 0.2ml sterile DI water	100 ug

[Bulk quote request](#)

<b>Availability</b>	1-3 business days
<b>Species Reactivity</b>	Human
<b>Format</b>	Antigen affinity purified
<b>Host</b>	Rabbit
<b>Clonality</b>	Polyclonal (rabbit origin)
<b>Isotype</b>	Rabbit IgG
<b>Purity</b>	Antigen affinity purified
<b>Buffer</b>	Lyophilized from 1X PBS with 2% Trehalose
<b>UniProt</b>	Q96T51
<b>Applications</b>	Western Blot : 0.5-1ug/ml Flow Cytometry : 1-3ug/million cells Direct ELISA : 0.1-0.5ug/ml
<b>Limitations</b>	This RUFY1 antibody is available for research use only.



Flow cytometry testing of fixed and permeabilized human MCF7 cells with RUFY1 antibody at 1ug/million cells (blocked with goat sera); Red=cells alone, Green=isotype control, Blue= RUFY1 antibody.



Western blot testing of human 1) HeLa and 2) SiHa cell lysate with RUFY1 antibody. Predicted molecular weight ~80 kDa.

## Description

RUN and FYVE domain-containing protein 1 is a protein that in humans is encoded by the RUFY1 gene. This gene encodes a protein that contains a RUN domain and a FYVE-type zinc finger domain. The encoded protein binds to phosphatidylinositol-3-phosphate (PI3P) and plays a role in early endosomal trafficking, tethering and fusion through interactions with small GTPases including Rab4, Rab5 and Rab14. Alternatively spliced transcript variants encoding multiple isoforms have been observed for this gene.

## Application Notes

Optimal dilution of the RUFY1 antibody should be determined by the researcher.

## Immunogen

An E.coli-derived human recombinant protein (L20-Q650) was used as the immunogen for the RUFY1 antibody.

## Storage

After reconstitution, the RUFY1 antibody can be stored for up to one month at 4oC. For long-term, aliquot and store at -20oC. Avoid repeated freezing and thawing.