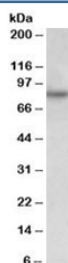


RUFY1 Antibody (R35333)

Catalog No.	Formulation	Size
R35333-100UG	0.5 mg/ml in 1X TBS, pH7.3, with 0.5% BSA (US sourced) and 0.02% sodium azide	100 ug

[Bulk quote request](#)

Availability	1-3 business days
Species Reactivity	Human
Predicted Reactivity	Cow, Dog, Mouse, Rat
Format	Antigen affinity purified
Host	Goat
Clonality	Polyclonal (goat origin)
Isotype	Goat Ig
Purity	Antigen affinity
Gene ID	80230
Applications	Western Blot : 0.05-0.2ug/ml ELISA (peptide) LOD : 1:32000
Limitations	This RUFY1 antibody is available for research use only.



Western blot testing of HeLa lysate with RUFY1 antibody at 0.05ug/ml. Predicted molecular weight: ~80kDa.

Description

Additional name(s) for this target protein: RUN and FYVE domain containing 1

Application Notes

Optimal dilution of the RUFY1 antibody should be determined by the researcher.

Immunogen

Amino acids QKNEAITSFEGKT were used as the immunogen for this RUFY1 antibody.

Storage

Aliquot and store the RUFY1 antibody at -20oC.