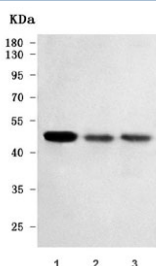


RTL3 Antibody / Retrotransposon Gag-like protein 3 (RQ7941)

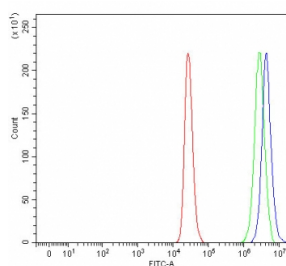
Catalog No.	Formulation	Size
RQ7941	0.5mg/ml if reconstituted with 0.2ml sterile DI water	100 ug

Bulk quote request

Availability	1-3 business days
Species Reactivity	Human
Format	Antigen affinity purified
Clonality	Polyclonal (rabbit origin)
Isotype	Rabbit IgG
Purity	Antigen affinity purified
Buffer	Lyophilized from 1X PBS with 2% Trehalose
UniProt	Q8N8U3
Applications	Western Blot : 0.5-1ug/ml Flow Cytometry : 1-3ug/million cells Direct ELISA : 0.1-0.5ug/ml
Limitations	This RTL3 antibody is available for research use only.



Western blot testing of human 1) U-251, 2) U-87 MG and 3) U-2 OS cell lysate with RTL3 antibody. Predicted molecular weight ~53 kDa.



Flow cytometry testing of human ThP-1 cells with RTL3 antibody at 1ug/million cells (blocked with goat sera); Red=cells alone, Green=isotype control, Blue= RTL3 antibody.

Description

Retrotransposon Gag like 3 is a protein that in humans is encoded by the RTL3 gene. This gene is a member of a family of gag-related retrotransposon genes. These genes appear to have lost the ability to retrotranspose; however, their open reading frames have remained intact, which may indicate that these genes have acquired new functions in the cell.

Application Notes

Optimal dilution of the RTL3 antibody should be determined by the researcher.

Immunogen

E. coli-derived recombinant human protein (amino acids Q168-Q475) was used as the immunogen for the RTL3 antibody.

Storage

After reconstitution, the RTL3 antibody can be stored for up to one month at 4oC. For long-term, aliquot and store at -20oC. Avoid repeated freezing and thawing.