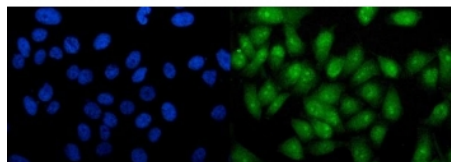


RTCA Antibody / RTCD1 (RQ6396)

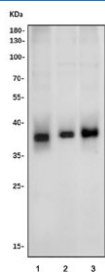
Catalog No.	Formulation	Size
RQ6396	0.5mg/ml if reconstituted with 0.2ml sterile DI water	100 ug

Bulk quote request

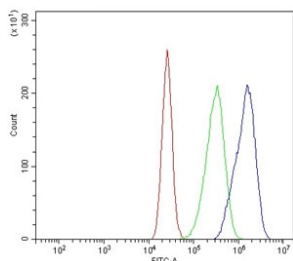
Availability	1-3 business days
Species Reactivity	Human
Format	Purified
Clonality	Polyclonal (rabbit origin)
Isotype	Rabbit IgG
Purity	Antigen affinity purified
Buffer	Lyophilized from 1X PBS with 2% Trehalose
UniProt	O00442
Localization	Nuclear
Applications	Western Blot : 0.5-1ug/ml Immunofluorescence (FFPE) : 5ug/ml Flow Cytometry : 1-3ug/million cells Direct ELISA : 0.1-0.5ug/ml
Limitations	This RTCA antibody is available for research use only.



Immunofluorescent staining of FFPE human PC-3 cells with RTCA antibody (green) and DAPI nuclear stain (blue). HIER: steam section in pH6 citrate buffer for 20 min.



Western blot testing of human 1) U-87 MG, 2) ThP-1 and 3) A431 cell lysate with RTCA antibody. Predicted molecular weight ~39 kDa.



Flow cytometry testing of human Caco-2 cells with RTCA antibody at 1ug/million cells (blocked with goat sera); Red=cells alone, Green=isotype control, Blue= RTCA antibody.

Description

The RTCA gene encodes a member of the RNA 3'-phosphate cyclase family. The encoded protein plays a role in RNA metabolism by catalyzing the ATP-dependent conversion of the 3'-phosphate of RNA substrates to a 2',3'-cyclic phosphodiester. Alternatively spliced transcript variants encoding multiple isoforms have been observed for this gene.

Application Notes

Optimal dilution of the RTCA antibody should be determined by the researcher.

Immunogen

Recombinant human protein (amino acids Q18-L366) was used as the immunogen for the RTCA antibody.

Storage

After reconstitution, the RTCA antibody can be stored for up to one month at 4°C. For long-term, aliquot and store at -20°C. Avoid repeated freezing and thawing.