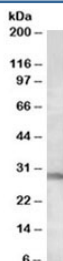


RSPO3 Antibody (R35295)

Catalog No.	Formulation	Size
R35295-100UG	0.5 mg/ml in 1X TBS, pH7.3, with 0.5% BSA (US sourced) and 0.02% sodium azide	100 ug

[Bulk quote request](#)

Availability	1-3 business days
Species Reactivity	Human
Predicted Reactivity	Cow, Dog, Mouse, Rat
Format	Antigen affinity purified
Host	Goat
Clonality	Polyclonal (goat origin)
Isotype	Goat Ig
Purity	Antigen affinity
Gene ID	84870
Applications	Western Blot : 0.3-1ug/ml ELISA (peptide) LOD : 1:8000
Limitations	This RSPO3 antibody is available for research use only.



Western blot testing of human skeletal muscle lysate with RSPO3 antibody at 0.3ug/ml.
Predicted molecular weight ~30kDa.

Description

Additional name(s) for this target protein: R-spondin 3; CRISTIN1

Application Notes

Optimal dilution of the RSPO3 antibody should be determined by the researcher.

Immunogen

Amino acids QHPSAKGNLCPPT were used as the immunogen for this RSPO3 antibody.

Storage

Aliquot and store the RSPO3 antibody at -20oC.