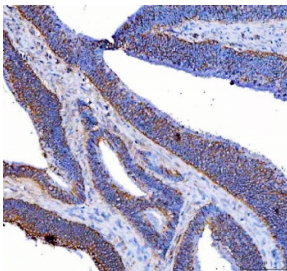


RSPH3 Antibody / Radial spoke head protein 3 (RQ8424)

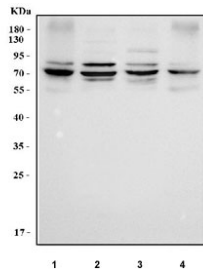
Catalog No.	Formulation	Size
RQ8424	0.5mg/ml if reconstituted with 0.2ml sterile DI water	100 ug

Bulk quote request

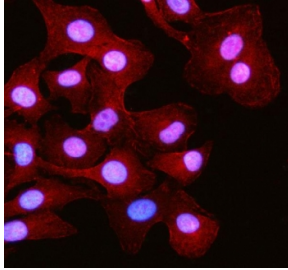
Availability	1-3 business days
Species Reactivity	Human
Format	Antigen affinity purified
Host	Rabbit
Clonality	Polyclonal (rabbit origin)
Isotype	Rabbit IgG
Purity	Antigen affinity purified
Buffer	Lyophilized from 1X PBS with 2% Trehalose
UniProt	Q86UC2
Localization	Cytoplasm
Applications	Western Blot : 0.5-1ug/ml Flow Cytometry : 1-3ug/million cells Immunohistochemistry (FFPE) : 2-5ug/ml Immunofluorescence : 5ug/ml ELISA : 0.1-0.5ug/ml
Limitations	This RSPH3 antibody is available for research use only.



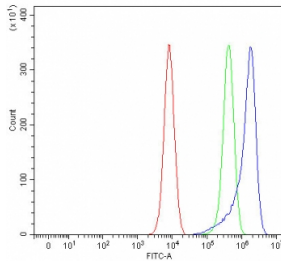
IHC staining of FFPE human colon cancer tissue with RSPH3 antibody. HIER: boil tissue sections in pH8 EDTA for 20 min and allow to cool before testing.



Western blot testing of human 1) SiHa, 2) U-87 MG, 3) A431 and 4) HaCaT cell lysate with RSPH3 antibody. Predicted molecular weight ~64 kDa and ~53 kDa (two isoforms).



Immunofluorescent staining of FFPE human A549 cells with RSPH3 antibody (red) and DAPI nuclear stain (blue). HIER: steam section in pH6 citrate buffer for 20 min.



Flow cytometry testing of fixed and permeabilized human K562 cells with RSPH3 antibody at 1ug/million cells (blocked with goat sera); Red=cells alone, Green=isotype control, Blue= RSPH3 antibody.

Description

Radial spoke head protein 3 homolog (RSPH3), also known as radial spoke head-like protein 2 (RSHL2), is a protein that in humans is encoded by the RSPH3 gene. The protein encoded by this gene acts as a protein kinase A anchoring protein. Mutations in this gene cause primary ciliary dyskinesia; a disorder characterized by defects of the axoneme in motile cilia and sperm flagella. The homolog of this gene was first identified in the blue-green algae *Chlamydomonas* as encoding a radial spoke protein that formed a structural component of motile cilia and flagella. Alternate splicing results in multiple transcript variants encoding distinct isoforms.

Application Notes

Optimal dilution of the RSPH3 antibody should be determined by the researcher.

Immunogen

An E.coli-derived human recombinant protein (Q31-H473) was used as the immunogen for the RSPH3 antibody.

Storage

After reconstitution, the RSPH3 antibody can be stored for up to one month at 4oC. For long-term, aliquot and store at -20oC. Avoid repeated freezing and thawing.

