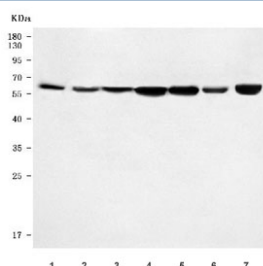


Rsl1d1 Antibody / Ribosomal L1 domain-containing protein 1 (RQ7924)

Catalog No.	Formulation	Size
RQ7924	0.5mg/ml if reconstituted with 0.2ml sterile DI water	100 ug

Bulk quote request

Availability	1-3 business days
Species Reactivity	Mouse, Rat
Format	Antigen affinity purified
Clonality	Polyclonal (rabbit origin)
Isotype	Rabbit IgG
Purity	Antigen affinity purified
Buffer	Lyophilized from 1X PBS with 2% Trehalose
UniProt	Q8BVY0
Applications	Western Blot : 0.5-1ug/ml Direct ELISA : 0.1-0.5ug/ml
Limitations	This Rsl1d1 antibody is available for research use only.



Western blot testing of 1) rat brain, 2) rat kidney, 3) rat heart, 4) rat RH35, 5) mouse brain, 6) mouse heart and 7) mouse C2C12 cell lysate with Rsl1d1 antibody. Predicted molecular weight ~55 kDa, commonly observed at 55-70 kDa.

Description

Ribosomal L1 domain-containing protein 1 is a protein that in humans is encoded by the RSL1D1 gene. Predicted to enable mRNA 3'-UTR binding activity and mRNA 5'-UTR binding activity. Predicted to be involved in maturation of LSU-rRNA; regulation of apoptotic process; and regulation of cellular senescence. Predicted to act upstream of or within regulation of protein localization. Located in nucleolus. Is expressed in several structures, including eye; genitourinary system; liver; lung; and spleen. Orthologous to human RSL1D1 (ribosomal L1 domain containing 1).

Application Notes

Optimal dilution of the Rsl1d1 antibody should be determined by the researcher.

Immunogen

E. coli-derived recombinant mouse protein (amino acids E62-N452) was used as the immunogen for the Rsl1d1 antibody.

Storage

After reconstitution, the Rsl1d1 antibody can be stored for up to one month at 4°C. For long-term, aliquot and store at -20°C. Avoid repeated freezing and thawing.