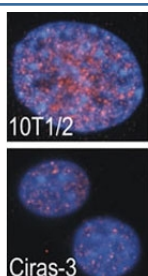


RSKB Antibody / MSK2 / RPS6KA4 (F40136)

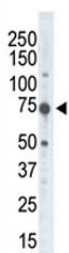
| Catalog No. | Formulation | Size |
|---------------|--|---------|
| F40136-0.4ML | In 1X PBS, pH 7.4, with 0.09% sodium azide | 0.4 ml |
| F40136-0.08ML | In 1X PBS, pH 7.4, with 0.09% sodium azide | 0.08 ml |

[Bulk quote request](#)

| | |
|---------------------------|--|
| Availability | 1-3 business days |
| Species Reactivity | Human, Mouse |
| Format | Purified |
| Clonality | Polyclonal (rabbit origin) |
| Isotype | Rabbit Ig |
| Purity | Purified |
| UniProt | O75676 |
| Applications | Western Blot : 1:1000 |
| Limitations | This RSKB antibody is available for research use only. |



Indirect IF analysis showed that RSKB is localized in the nucleus of parental (10T1/2) and oncogene-transformed (Ciras-3) mouse fibroblasts; DAPI nuclear counterstain. Courtesy of B. Drohic and Dr. J. Davie, Univ. of Manitoba.



Western blot of RSKB antibody and placenta tissue lysate

Description

Protein kinases are enzymes that transfer a phosphate group from a phosphate donor, generally the γ phosphate of ATP, onto an acceptor amino acid in a substrate protein. By this basic mechanism, protein kinases mediate most of the signal transduction in eukaryotic cells, regulating cellular metabolism, transcription, cell cycle progression, cytoskeletal rearrangement and cell movement, apoptosis, and differentiation. With more than 500 gene products, the protein kinase family is one of the largest families of proteins in eukaryotes. The family has been classified in 8 major groups based on sequence comparison of their tyrosine (PTK) or serine/threonine (STK) kinase catalytic domains. The AGC kinase group consists of 63 kinases including the cyclic nucleotide-regulated protein kinase (PKA & PKG) family, the diacylglycerol-activated/phospholipid-dependent protein kinase C (PKC) family, the related to PKA and PKC (RAC/Akt) protein kinase family, the kinases that phosphorylate G protein-coupled receptors family (ARK), and the kinases that phosphorylate ribosomal protein S6 family (RSK). The calcium/calmodulin-dependent kinase (CAMK) group consists of 75 kinases regulated by Ca^{2+} /CaM and close relative family (CAMK, CAMKL, DAPK, MAPKAPK).

Application Notes

Titration of the RSKB antibody may be required due to differences in protocols and secondary/substrate sensitivity.

Immunogen

A portion of amino acids 322-354 from the human protein was used as the immunogen for this RSKB antibody.

Storage

Aliquot the RSKB antibody and store frozen at -20°C or colder. Avoid repeated freeze-thaw cycles.