

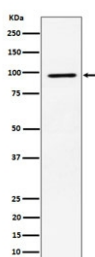
RSK2 Antibody / RPS6KA3 / Ribosomal protein S6 kinase alpha 3 [clone 28R24] (RQ8298)

Catalog No.	Formulation	Size
RQ8298	Antibody in PBS with 0.02% sodium azide, 50% glycerol and 0.4-0.5mg/ml BSA	100 ul

Recombinant **RABBIT MONOCLONAL**

[Bulk quote request](#)

Availability	1-3 business days
Species Reactivity	Human
Format	Purified
Clonality	Recombinant Rabbit Monoclonal
Isotype	Rabbit IgG
Clone Name	28R24
Purity	Affinity chromatography
UniProt	P51812
Applications	Western Blot : 1:500-1:2000
Limitations	This RSK2 antibody is available for research use only.



Western blot testing of human MCF7 cell lysate with RSK2 antibody. Predicted molecular weight ~84 kDa, commonly observed at 84-90 kDa.

Description

Ribosomal protein S6 kinase alpha 3 (RPS6KA3, RSK2) is a serine/threonine-protein kinase that acts downstream of ERK (MAPK1/ERK2 and MAPK3/ERK1) signaling and mediates mitogenic and stress-induced activation of the transcription factors CREB1, ETV1/ER81 and NR4A1/NUR77, regulates translation through RPS6 and EIF4B phosphorylation, and mediates cellular proliferation, survival, and differentiation by modulating mTOR signaling and repressing pro-apoptotic function of BAD and DAPK1. [UniProt]

Application Notes

Optimal dilution of the RSK2 antibody should be determined by the researcher.

Immunogen

A synthetic peptide derived from human RSK2 / RPS6KA3 was used as the immunogen for the RSK2 antibody.

Storage

Store the RSK2 antibody at -20oC.