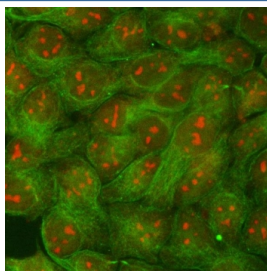


## RRP1B Antibody / Ribosomal RNA processing protein 1 homolog B (RQ7579)

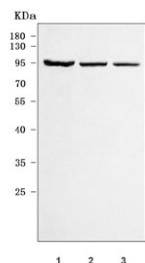
Catalog No.	Formulation	Size
RQ7579	0.5mg/ml if reconstituted with 0.2ml sterile DI water	100 ug

[Bulk quote request](#)

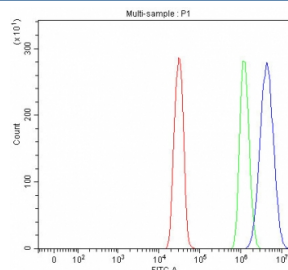
<b>Availability</b>	1-3 business days
<b>Species Reactivity</b>	Human
<b>Format</b>	Antigen affinity purified
<b>Clonality</b>	Polyclonal (rabbit origin)
<b>Isotype</b>	Rabbit IgG
<b>Purity</b>	Antigen affinity purified
<b>Buffer</b>	Lyophilized from 1X PBS with 2% Trehalose
<b>UniProt</b>	Q14684
<b>Localization</b>	Nuclear
<b>Applications</b>	Western Blot : 0.5-1ug/ml Immunofluorescence : 5ug/ml Flow Cytometry : 1-3ug/million cells Direct ELISA : 0.1-0.5ug/ml
<b>Limitations</b>	This RRP1B antibody is available for research use only.



Immunofluorescent staining of FFPE human MCF7 cells with RRP1B antibody (red) and Beta Tubulin mAb (green). HIER: steam section in pH6 citrate buffer for 20 min.



Western blot testing of human 1) 293T, 2) HepG2 and 3) HeLa cell lysate with RRP1B antibody. Predicted molecular weight ~84 kDa.



Flow cytometry testing of human SiHa cells with RRP1B antibody at 1ug/million cells (blocked with goat sera); Red=cells alone, Green=isotype control, Blue= RRP1B antibody.

## Description

RRP1B (ribosomal RNA processing 1 homolog B), also known as RRP1-like protein B and KIAA0179, is a human gene which is located on Chromosome 21. Enables transcription coactivator activity. Involved in several processes, including cellular response to virus; positive regulation by host of viral transcription; and positive regulation of transcription by RNA polymerase II. Located in chromosome; granular component; and nucleoplasm.

## Application Notes

Optimal dilution of the RRP1B antibody should be determined by the researcher.

## Immunogen

E. coli-derived recombinant human protein (amino acids E20-K727) was used as the immunogen for the RRP1B antibody.

## Storage

After reconstitution, the RRP1B antibody can be stored for up to one month at 4°C. For long-term, aliquot and store at -20°C. Avoid repeated freezing and thawing.