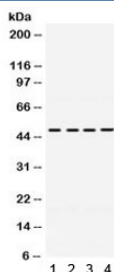


RRM2 Antibody (R32063)

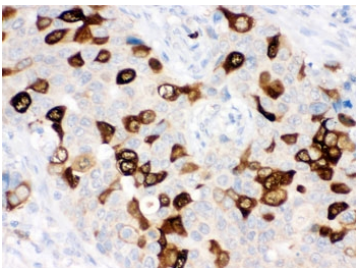
Catalog No.	Formulation	Size
R32063	0.5mg/ml if reconstituted with 0.2ml sterile DI water	100 ug

[Bulk quote request](#)

Availability	1-3 business days
Species Reactivity	Human, Mouse, Rat
Format	Antigen affinity purified
Host	Rabbit
Clonality	Polyclonal (rabbit origin)
Isotype	Rabbit IgG
Purity	Antigen affinity
Buffer	Lyophilized from 1X PBS with 2.5% BSA and 0.025% sodium azide
UniProt	P31350
Localization	Cytoplasmic, membrane
Applications	Western Blot : 0.1-0.5ug/ml IHC (FFPE) : 0.5-1ug/ml
Limitations	This RRM2 antibody is available for research use only.



Western blot testing of 1) rat heart, 2) mouse heart, 3) human A431 and 4) human HeLa lysate with RRM2 antibody. Expected/observed molecular weight: 45~50 kDa.



IHC testing of FFPE human breast cancer tissue with RRM2 antibody. HIER: Boil the paraffin sections in pH 6, 10mM citrate buffer for 20 minutes and allow to cool prior to staining.

Description

Ribonucleoside-diphosphate reductase subunit M2, also known as ribonucleotide reductase small subunit, is an enzyme that in humans is encoded by the RRM2 gene. It is mapped to 2p25-p24. This gene encodes one of two non-identical subunits for ribonucleotide reductase. This reductase catalyzes the formation of deoxyribonucleotides from ribonucleotides. Synthesis of the encoded protein (M2) is regulated in a cell-cycle dependent fashion. Transcription from this gene can initiate from alternative promoters, which results in two isoforms which differ in the lengths of their N-termini. Related pseudogenes have been identified on chromosomes 1 and X.

Application Notes

Optimal dilution of the RRM2 antibody should be determined by the researcher.

Immunogen

Amino acids MLSLRVPLAPITDPQQQLSPLKGLSLVDKENT of human RRM2 were used as the immunogen for the RRM2 antibody.

Storage

After reconstitution, the RRM2 antibody can be stored for up to one month at 4oC. For long-term, aliquot and store at -20oC. Avoid repeated freezing and thawing.