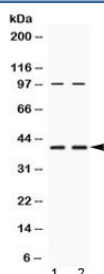


RPSA Antibody / 40S Ribosomal protein SA / Laminin Receptor 1 (R32562)

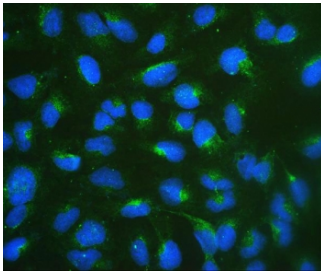
Catalog No.	Formulation	Size
R32562	0.5mg/ml if reconstituted with 0.2ml sterile DI water	100 ug

Bulk quote request

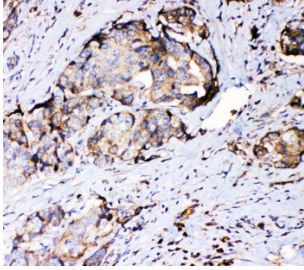
Availability	1-3 business days
Species Reactivity	Human
Format	Antigen affinity purified
Host	Rabbit
Clonality	Polyclonal (rabbit origin)
Isotype	Rabbit IgG
Purity	Antigen affinity
Buffer	Lyophilized from 1X PBS with 2.5% BSA and 0.025% sodium azide
UniProt	P08865
Applications	Western Blot : 0.5-1ug/ml Immunohistochemistry (FFPE) : 1-2ug/ml Immunofluorescence (FFPE) : 2-4ug/ml Flow Cytometry : 1-3ug/million cells
Limitations	This RPSA antibody is available for research use only.



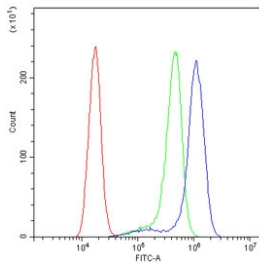
Western blot testing of human 1) HeLa and 2) U-2 OS cell lysate with RPSA antibody at 0.5ug/ml. Routinely observed molecular weight: 37-40 kDa and 67 kDa.



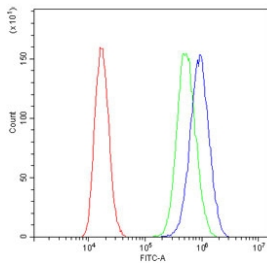
Immunofluorescent staining of FFPE human U-2 OS cells with RPSA antibody (green) and DAPI nuclear stain (blue). HIER: boil tissue sections in pH6, 10mM citrate buffer, for 20 min and allow to cool before testing.



IHC staining of FFPE human breast cancer with RPSA antibody. HIER: boil tissue sections in pH6, 10mM citrate buffer, for 20 min and allow to cool before testing.



Flow cytometry testing of human A431 cells with RPSA antibody at 1ug/million cells (blocked with goat sera); Red=cells alone, Green=isotype control, Blue= RPSA antibody.



Flow cytometry testing of human PC-3 cells with RPSA antibody at 1ug/million cells (blocked with goat sera); Red=cells alone, Green=isotype control, Blue= RPSA antibody.

Description

40S ribosomal protein SA is a Ribosomal protein that in humans is encoded by the RPSA gene. This RPSA gene encodes a high-affinity, non-integrin family, laminin receptor 1. This receptor has been variously called 67 kD laminin receptor, 37 kD laminin receptor precursor (37LRP) and p40 ribosome-associated protein. The amino acid sequence of laminin receptor 1 is highly conserved through evolution, suggesting a key biological function. It has been observed that the level of the laminin receptor transcript is higher in colon carcinoma tissue and lung cancer cell line than their normal counterparts. Also, there is a correlation between the upregulation of this polypeptide in cancer cells and their invasive and metastatic phenotype. Multiple copies of this gene exist, however, most of them are pseudogenes thought to have arisen from retropositional events. Two alternatively spliced transcript variants encoding the same protein have been found for this gene.

Application Notes

Differences in protocols and secondary/substrate sensitivity may require the RPSA antibody to be titrated for optimal performance.

Immunogen

Amino acids S2-S138 from the human protein were used as the immunogen for the RPSA antibody.

Storage

After reconstitution, the RPSA antibody can be stored for up to one month at 4oC. For long-term, aliquot and store at -20oC. Avoid repeated freezing and thawing.