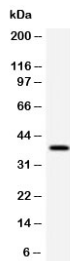


RPSA Antibody / 40S Ribosomal protein SA / Laminin Receptor 1 [clone LMNR-1] (V7289)

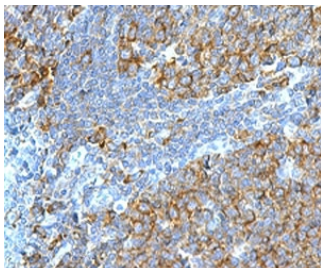
Catalog No.	Formulation	Size
V7289-100UG	0.2 mg/ml in 1X PBS with 0.1 mg/ml BSA (US sourced) and 0.05% sodium azide	100 ug
V7289-20UG	0.2 mg/ml in 1X PBS with 0.1 mg/ml BSA (US sourced) and 0.05% sodium azide	20 ug
V7289SAF-100UG	1 mg/ml in 1X PBS; BSA free, sodium azide free	100 ug
V7289IHC-7ML	Prediluted in 1X PBS with 0.1 mg/ml BSA (US sourced) and 0.05% sodium azide; *For IHC use only*	7 ml

Bulk quote request

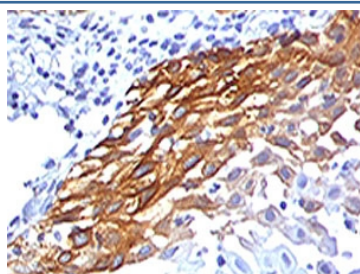
Availability	1-3 business days
Species Reactivity	Human
Format	Purified
Host	Mouse
Clonality	Monoclonal (mouse origin)
Isotype	Mouse IgG
Clone Name	LMNR-1
Purity	Protein G affinity chromatography
UniProt	P08865
Localization	Cell surface, cytoplasmic, nuclear
Applications	Immunofluorescence : 1-2ug/ml Flow Cytometry : 1-2ug/10 ⁶ cells Western Blot : 1-2ug/ml Immunohistochemistry (FFPE) : 1-2ug/ml for 30 min at RT Prediluted IHC Only Format : incubate for 30 min at RT (1)
Limitations	This RPSA antibody is available for research use only.



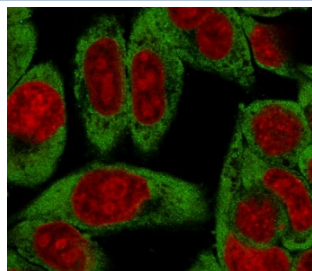
Western blot testing of human HeLa cell lysate with RPSA antibody (clone LMNR-1).
Routinely observed molecular weight: 37-40 kDa and 67 kDa.



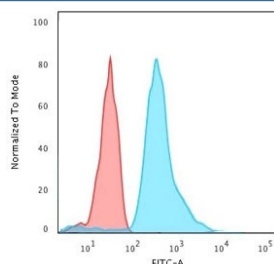
IHC testing of FFPE human tonsil stained with RPSA antibody (clone LMNR-1).
Required HIER: boiling tissue sections in pH 9 10mM Tris with 1mM EDTA for 10-20 min followed by cooling at RT for 20 min.



IHC testing of FFPE human cervical carcinoma stained with RPSA antibody (clone LMNR-1). Required HIER: boiling tissue sections in pH 9 10mM Tris with 1mM EDTA for 10-20 min followed by cooling at RT for 20 min.



Immunofluorescent staining of PFA-fixed human HeLa cells with RPSA antibody (green, clone LMNR-1) and Reddot nuclear stain (red).



FACS staining of PFA-fixed Raji cells with RPSA antibody (clone LMNR-1); Red=isotype control, Blue= RPSA antibody.

Description

Required for the assembly and/or stability of the 40S ribosomal subunit. Required for the processing of the 20S rRNA-precursor to mature 18S rRNA in a late step of the maturation of 40S ribosomal subunits. Also functions as a cell surface receptor for laminin. Plays a role in cell adhesion to the basement membrane and in the consequent activation of signaling transduction pathways. May play a role in cell fate determination and tissue morphogenesis. Acts as a PPP1R16B-dependent substrate of PPP1CA. [UniProt]

Application Notes

The stated application concentrations are suggested starting points. Titration of the RPSA antibody may be required due

to differences in protocols and secondary/substrate sensitivity.

1. The prediluted format is supplied in a dropper bottle and is optimized for use in IHC. After epitope retrieval step (if required), drip mAb solution onto the tissue section and incubate at RT for 30 min.

Immunogen

Recombinant full length protein was used as the immunogen for the RPSA antibody.

Storage

Store the RPSA antibody at 2-8oC (with azide) or aliquot and store at -20oC or colder (without azide).