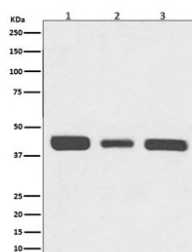


## RPSA Antibody / 40S Ribosomal protein SA / Laminin Receptor 1 [clone AOA-18] (RQ5263)

Catalog No.	Formulation	Size
RQ5263	Antibody in PBS with 0.02% sodium azide, 50% glycerol and 0.4-0.5mg/ml BSA	100 ul

[Bulk quote request](#)

<b>Availability</b>	1-2 weeks
<b>Species Reactivity</b>	Human, Mouse, Rat
<b>Format</b>	Purified
<b>Host</b>	Rabbit
<b>Clonality</b>	Rabbit Monoclonal
<b>Isotype</b>	Rabbit IgG
<b>Clone Name</b>	AOA-18
<b>Purity</b>	Affinity purified
<b>UniProt</b>	P08865
<b>Applications</b>	Western Blot : 1:500-1:2000
<b>Limitations</b>	This RPSA antibody is available for research use only.



Western blot testing of 1) human HeLa, 2) mouse NIH3T3 and 3) rat PC-12 cell lysate with RPSA antibody. Routinely observed molecular weight: 37-40 kDa and 67 kDa.

## Description

Laminins, a family of extracellular matrix glycoproteins, are the major noncollagenous constituent of basement membranes. They have been implicated in a wide variety of biological processes including cell adhesion, differentiation, migration, signaling, neurite outgrowth and metastasis. Many of the effects of laminin are mediated through interactions with cell surface receptors. These receptors include members of the integrin family, as well as non-integrin laminin-binding proteins. This gene encodes a high-affinity, non-integrin family, laminin receptor 1. This receptor has been

variously called 67 kD laminin receptor, 37 kD laminin receptor precursor (37LRP) and p40 ribosome-associated protein.  
[RefSeq]

## Application Notes

Optimal dilution of the RPSA antibody should be determined by the researcher.

## Immunogen

A synthetic peptide specific to human 40S Ribosomal protein SA / RPSA was used as the immunogen for the RPSA antibody.

## Storage

Store the RPSA antibody at -20oC.