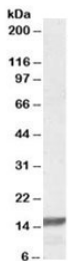


RPS19 Antibody (R34535)

Catalog No.	Formulation	Size
R34535-100UG	0.5 mg/ml in 1X TBS, pH7.3, with 0.5% BSA (US sourced) and 0.02% sodium azide	100 ug

[Bulk quote request](#)

Availability	1-3 business days
Species Reactivity	Human
Predicted Reactivity	Mouse, Rat, Dog, Cow
Format	Antigen affinity purified
Host	Goat
Clonality	Polyclonal (goat origin)
Isotype	Goat Ig
Purity	Antigen affinity
Gene ID	6223
Applications	Western Blot : 0.1-0.3ug/ml ELISA (peptide) LOD : 1:4000
Limitations	This RPS19 antibody is available for research use only.



Western blot testing of K562 lysate with RPS19 antibody at 0.1ug/ml. Predicted molecular weight: ~16 kDa.

Description

Additional name(s) for this target protein: Ribosomal protein S19

Application Notes

Optimal dilution of the RPS19 antibody should be determined by the researcher.

Immunogen

Amino acids KMVEKDQDGGRK were used as the immunogen for this RPS19 antibody.

Storage

Aliquot and store the RPS19 antibody at -20°C.