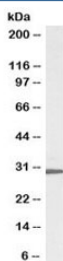


## RPL8 Antibody Biotin Conjugate (R34345BTN)

Catalog No.	Formulation	Size
R34345BTN	0.5 mg/ml in 1X TBS, pH7.3, with 0.5% BSA (US sourced) and 0.02% sodium azide	100 ug

[Bulk quote request](#)

<b>Availability</b>	1-3 business days
<b>Species Reactivity</b>	Human
<b>Predicted Reactivity</b>	Dog, Mouse, Rat
<b>Format</b>	Biotin Conjugate
<b>Host</b>	Goat
<b>Clonality</b>	Polyclonal (goat origin)
<b>Isotype</b>	Goat Ig
<b>Purity</b>	Antigen affinity
<b>Gene ID</b>	6132
<b>Applications</b>	Western Blot : 0.1-0.3ug/ml Immunohistochemistry (FFPE) : suitable ELISA (peptide) LOD : 1:128000
<b>Limitations</b>	This RPL8 antibody is available for research use only.



Western blot testing of HepG2 cell lysate with biotinylated RPL8 antibody at 0.3ug/ml.  
Predicted molecular weight: ~28kDa.

### Description

Additional name(s) for this target protein: Ribosomal protein L8

### Application Notes

Optimal dilution of the RPL8 antibody should be determined by the researcher.

## **Immunogen**

Amino acids KAGRAYHKYKAKRNC were used as the immunogen for this RPL8 antibody.

## **Storage**

Aliquot and store the RPL8 antibody at -20oC.