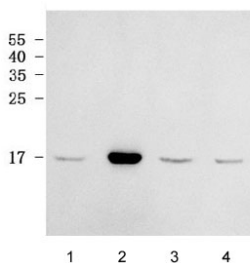


## RPL38 Antibody / 60S ribosomal protein L38 (RQ7914)

Catalog No.	Formulation	Size
RQ7914	0.5mg/ml if reconstituted with 0.2ml sterile DI water	100 ug

[Bulk quote request](#)

<b>Availability</b>	1-3 business days
<b>Species Reactivity</b>	Human
<b>Format</b>	Antigen affinity purified
<b>Host</b>	Rabbit
<b>Clonality</b>	Polyclonal (rabbit origin)
<b>Isotype</b>	Rabbit IgG
<b>Purity</b>	Antigen affinity purified
<b>Buffer</b>	Lyophilized from 1X PBS with 2% Trehalose
<b>UniProt</b>	P63173
<b>Applications</b>	Western Blot : 0.5-1ug/ml Direct ELISA : 0.1-0.5ug/ml
<b>Limitations</b>	This RPL38 antibody is available for research use only.



Western blot testing of human 1) HeLa, 2) MCF7, 3) ThP-1 and 4) HL60 cell lysate with RPL38 antibody. Predicted molecular weight ~8 kDa.

### Description

60S ribosomal protein L38 is a protein that in humans is encoded by the RPL38 gene. Ribosomes, the organelles that catalyze protein synthesis, consist of a small 40S subunit and a large 60S subunit. Together these subunits are composed of 4 RNA species and approximately 80 structurally distinct proteins. This gene encodes a ribosomal protein that is a component of the 60S subunit. The protein belongs to the L38E family of ribosomal proteins. It is located in the cytoplasm. Alternative splice variants have been identified, both encoding the same protein. As is typical for genes encoding ribosomal proteins, there are multiple processed pseudogenes of this gene dispersed through the genome,

including one located in the promoter region of the type 1 angiotensin II receptor gene.

## **Application Notes**

Optimal dilution of the RPL38 antibody should be determined by the researcher.

## **Immunogen**

E. coli-derived recombinant human protein (amino acids M1-K70) was used as the immunogen for the RPL38 antibody.

## **Storage**

After reconstitution, the RPL38 antibody can be stored for up to one month at 4°C. For long-term, aliquot and store at -20°C. Avoid repeated freezing and thawing.