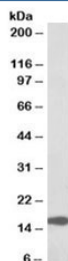


RPL23 Antibody (R34394)

| Catalog No. | Formulation | Size |
|--------------|-------------------------------------------------------------------------------|--------|
| R34394-100UG | 0.5 mg/ml in 1X TBS, pH7.3, with 0.5% BSA (US sourced) and 0.02% sodium azide | 100 ug |

[Bulk quote request](#)

| | |
|----------------------|---------------------------------------------------------------|
| Availability | 1-3 business days |
| Species Reactivity | Human, Mouse |
| Predicted Reactivity | Cow, Pig, Rat |
| Format | Antigen affinity purified |
| Host | Goat |
| Clonality | Polyclonal (goat origin) |
| Isotype | Goat Ig |
| Purity | Antigen affinity |
| Gene ID | 9349 |
| Applications | Western Blot : 0.1-0.3ug/ml ELISA (peptide) LOD : 1:128000 |
| Limitations | This RPL23 antibody is available for research use only. |



Western blot testing of human colorectal cancer lysate with RPL23 antibody at 0.1ug/ml.
Predicted molecular weight: ~15kDa.

Description

Additional name(s) for this target protein: Ribosomal protein L23

Application Notes

Optimal dilution of the RPL23 antibody should be determined by the researcher.

Immunogen

Amino acids KECADLWPRIASN were used as the immunogen for this RPL23 antibody.

Storage

Aliquot and store the RPL23 antibody at -20oC.