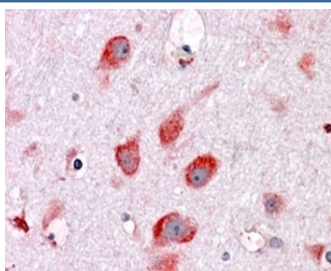


## RPL22 Antibody / Ribosomal Protein L22 (R35935)

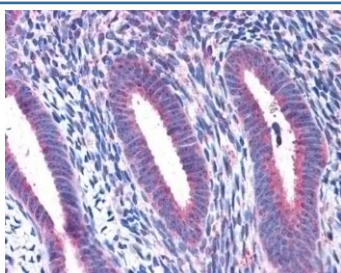
Catalog No.	Formulation	Size
R35935-100UG	0.5 mg/ml in 1X TBS, pH7.3, with 0.5% BSA (US sourced) and 0.02% sodium azide	100 ug

[Bulk quote request](#)

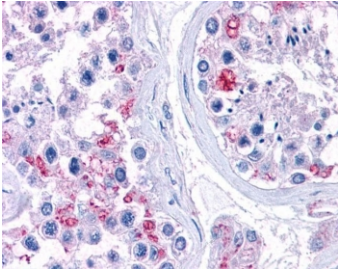
Availability	1-3 business days
Species Reactivity	Human
Format	Antigen affinity purified
Clonality	Polyclonal (goat origin)
Isotype	Goat Ig
Purity	Antigen affinity
Gene ID	6146
Localization	Cytoplasmic, nuclear
Applications	Immunohistochemistry (FFPE) : 3-6ug/ml ELISA (peptide) LOD : 1:16000
Limitations	This RPL22 antibody is available for research use only.



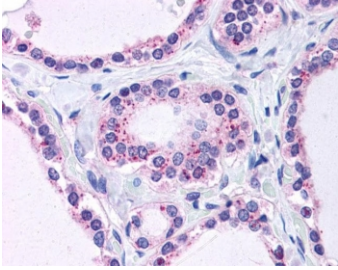
IHC testing of FFPE human cortex with RPL22 antibody at 4ug/ml. HIER: steamed with pH6 citrate buffer, AP-staining.



IHC testing of FFPE human uterus tissue with RPL22 antibody at 3.75ug/ml. HIER: steamed with pH6 citrate buffer, AP-staining.



IHC testing of FFPE human testis tissue with RPL22 antibody at 3.75ug/ml. HIER: steamed with pH6 citrate buffer, AP-staining.



IHC testing of FFPE human thyroid tissue with RPL22 antibody at 3.75ug/ml. HIER: steamed with pH6 citrate buffer, AP-staining.

## Description

Additional name(s) for this target protein: Ribosomal protein L22

## Application Notes

Optimal dilution of the RPL22 antibody should be determined by the researcher.

## Immunogen

Amino acids SKESYELRYFQINQ were used as the immunogen for this RPL22 antibody.

## Storage

Aliquot and store the RPL22 antibody at -20oC.