


RPL18A Antibody / 60S ribosomal protein L18a / Large ribosomal subunit protein eL20 (F55022)

Catalog No.	Formulation	Size
F55022-0.4ML	In 1X PBS, pH 7.4, with 0.09% sodium azide	0.4 ml
F55022-0.08ML	In 1X PBS, pH 7.4, with 0.09% sodium azide	0.08 ml

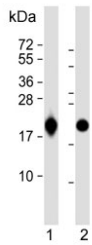
[Bulk quote request](#)

Availability	1-3 business days
Species Reactivity	Human, Mouse
Format	Purified
Host	Rabbit
Clonality	Polyclonal (rabbit origin)
Isotype	Rabbit Ig
Purity	Antigen affinity purified
UniProt	Q02543
Localization	Cytoplasmic
Applications	Flow Cytometry : 1:10-1:50 (1x10 ⁶ cells) Immunohistochemistry (FFPE) : 1:50-1:100 Western Blot : 1:500-1:1000
Limitations	This RPL18A antibody is available for research use only.

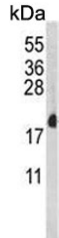
kDa
55
36
28
17
11



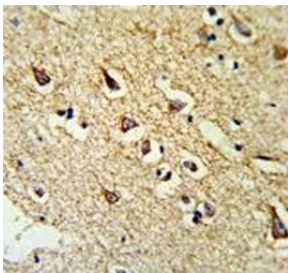
Western blot testing of human HEK293 cell lysate with RPL18A antibody. Predicted molecular weight ~21 kDa.



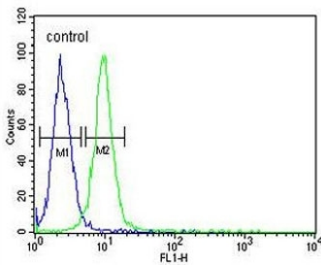
Western blot testing of human 1) HeLa and 2) MOLT4 cell lysate with RPL18A antibody. Predicted molecular weight ~21 kDa.



Western blot testing of mouse NIH 3T3 cell lysate with RPL18A antibody. Predicted molecular weight ~21 kDa.



IHC testing of FFPE human brain tissue with RPL18A antibody. HIER: steam section in pH6 citrate buffer for 20 min and allow to cool prior to staining.



Flow cytometry testing of human HEK293 cells with RPL18A antibody; Blue=isotype control, Green= RPL18A antibody.

Description

Ribosomes, the organelles that catalyze protein synthesis, consist of a small 40S subunit and a large 60S subunit. Together these subunits are composed of 4 RNA species and approximately 80 structurally distinct proteins. RPL18A is a ribosomal protein that is a component of the 60S subunit. The protein belongs to the L18AE family of ribosomal proteins. It is located in the cytoplasm.

Application Notes

The stated application concentrations are suggested starting points. Titration of the RPL18A antibody may be required due to differences in protocols and secondary/substrate sensitivity.

Immunogen

A portion of amino acids 140-166 from the human protein was used as the immunogen for the RPL18A antibody.

Storage

Aliquot the RPL18A antibody and store frozen at -20°C or colder. Avoid repeated freeze-thaw cycles.

