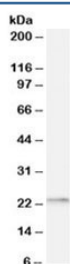


RPL17 Antibody / Ribosomal Protein L17 (R35826)

Catalog No.	Formulation	Size
R35826-100UG	0.5 mg/ml in 1X TBS, pH7.3, with 0.5% BSA (US sourced) and 0.02% sodium azide	100 ug

[Bulk quote request](#)

Availability	1-3 business days
Species Reactivity	Human
Predicted Reactivity	Mouse, Rat, Dog
Format	Antigen affinity purified
Clonality	Polyclonal (goat origin)
Isotype	Goat Ig
Purity	Antigen affinity
Gene ID	6139
Applications	Western Blot : 0.3-1ug/ml ELISA (peptide) LOD : 1:32000
Limitations	This RPL17 antibody is available for research use only.



Western blot testing of human prostate lysate with RPL17 antibody at 0.3ug/ml.
Predicted molecular weight: 21kDa.

Description

Additional name(s) for this target protein: Ribosomal protein L17

Application Notes

Optimal dilution of the RPL17 antibody should be determined by the researcher.

Immunogen

Amino acids RYSLDPENPTKSC were used as the immunogen for this RPL17 antibody.

Storage

Aliquot and store the RPL17 antibody at -20oC.