

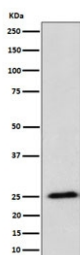
RPL10A Antibody / Large ribosomal subunit protein uL1 [clone 29R56] (RQ8813)

Catalog No.	Formulation	Size
RQ8813	Antibody in PBS with 0.02% sodium azide, 50% glycerol and 0.4-0.5mg/ml BSA	100 ul

Recombinant **RABBIT MONOCLONAL**

[Bulk quote request](#)

Availability	1-3 days
Species Reactivity	Human
Format	Purified
Clonality	Recombinant Rabbit Monoclonal
Isotype	Rabbit IgG
Clone Name	29R56
Purity	Affinity chromatography
UniProt	P62906
Applications	Western Blot : 1:500-1:2000
Limitations	This RPL10A antibody is available for research use only.



Western blot testing of human HeLa cell lysate with RPL10A antibody. Predicted molecular weight ~25 kDa.

Description

Large ribosomal subunit protein uL1/RPL10A is a component of the large ribosomal subunit. The ribosome is a large ribonucleoprotein complex responsible for the synthesis of proteins in the cell. [UniProt]

Application Notes

Optimal dilution of the RPL10A antibody should be determined by the researcher.

Immunogen

A synthetic peptide specific to human RPL10A protein was used as the immunogen for the RPL10A antibody.

Storage

Store the RPL10A antibody at -20oC.