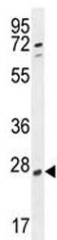


RPEL1 Antibody (F40008)

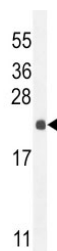
Catalog No.	Formulation	Size
F40008-0.4ML	In 1X PBS, pH 7.4, with 0.09% sodium azide	0.4 ml
F40008-0.08ML	In 1X PBS, pH 7.4, with 0.09% sodium azide	0.08 ml

[Bulk quote request](#)

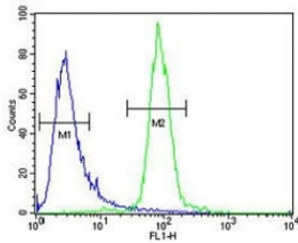
Availability	1-3 business days
Species Reactivity	Human, Mouse
Format	Antigen affinity purified
Clonality	Polyclonal (rabbit origin)
Isotype	Rabbit Ig
Purity	Antigen affinity
UniProt	Q2QD12
Applications	Western Blot : 1:1000 Flow Cytometry : 1:10-1:50
Limitations	This RPEL1 antibody is available for research use only.



RPEL1 antibody western blot analysis in K562 lysate



RPEL1 antibody western blot analysis in mouse liver tissue lysate



RPEL1 antibody flow cytometric analysis of K562 cells (green) compared to a negative control cell (blue). FITC-conjugated goat-anti-rabbit secondary Ab was used for the analysis.

Description

RPEL1 catalyzes the reversible epimerization of D-ribulose 5-phosphate to D-xylulose 5-phosphate. [UniProt]

Application Notes

Titration of the RPEL1 antibody may be required due to differences in protocols and secondary/substrate sensitivity.

Immunogen

A portion of amino acids 187-215 from the human protein was used as the immunogen for this RPEL1 antibody.

Storage

Aliquot the RPEL1 antibody and store frozen at -20oC or colder. Avoid repeated freeze-thaw cycles.