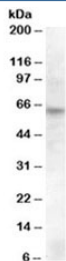


RPE65 Antibody (R34034)

| Catalog No. | Formulation | Size |
|--------------|---|--------|
| R34034-100UG | 0.5 mg/ml in 1X TBS, pH7.3, with 0.5% BSA (US sourced) and 0.02% sodium azide | 100 ug |

[Bulk quote request](#)

| | |
|-----------------------------|--|
| Availability | 1-3 business days |
| Species Reactivity | Human, Rat |
| Predicted Reactivity | Dog |
| Format | Antigen affinity purified |
| Host | Goat |
| Clonality | Polyclonal (goat origin) |
| Isotype | Goat Ig |
| Purity | Antigen affinity |
| Gene ID | 6121 |
| Applications | Western Blot : 0.5-1.5ug/ml ELISA (peptide) LOD : 1:32000 |
| Limitations | This RPE65 antibody is available for research use only. |



Western blot testing of rat retina lysate with RPE65 antibody at 0.5ug/ml. Predicted molecular weight 60~65kDa.



Western blot testing of rat retina lysate with RPE65 antibody at 0.1ug/ml. Predicted molecular weight 60~65kDa.

Description

Additional name(s) for this target protein: Retinal pigment epithelium-specific protein 65kDa

Application Notes

Optimal dilution of the RPE65 antibody should be determined by the researcher.

Immunogen

Amino acids EVKKNARKAPQPE were used as the immunogen for this RPE65 antibody.

Storage

Aliquot and store the RPE65 antibody at -20oC.