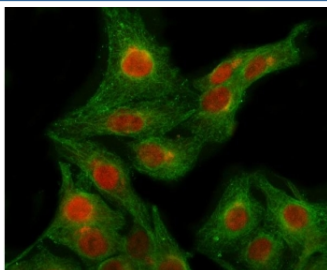


RPB2 Antibody / POLR2B (RQ8383)

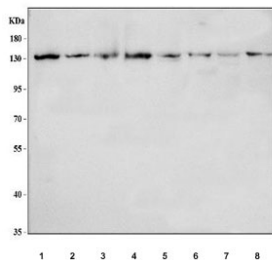
Catalog No.	Formulation	Size
RQ8383	0.5mg/ml if reconstituted with 0.2ml sterile DI water	100 ug

Bulk quote request

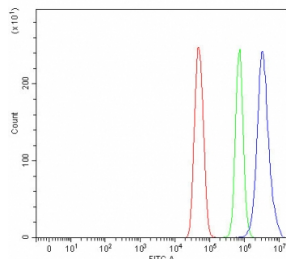
Availability	1-3 business days
Species Reactivity	Human, Mouse, Rat
Format	Antigen affinity purified
Clonality	Polyclonal (rabbit origin)
Isotype	Rabbit IgG
Purity	Antigen affinity purified
Buffer	Lyophilized from 1X PBS with 2% Trehalose
UniProt	P30876
Localization	Nuclear
Applications	Western Blot : 0.5-1ug/ml Immunofluorescence : 5ug/ml Flow Cytometry : 1-3ug/million cells ELISA : 0.1-0.5ug/ml
Limitations	This RPB2 antibody is available for research use only.



Immunofluorescent staining of FFPE human A549 cells with RPB2 antibody (red) and Beta Tubulin mAb (green). HIER: steam section in pH6 citrate buffer for 20 min.



Western blot testing of 1) human A431, 2) human HeLa, 3) human Ramos, 4) human U-251, 5) rat brain, 6) rat RH35, 7) mouse brain and 8) mouse NIH 3T3 cell lysate with RPB2 antibody. Predicted molecular weight ~134 kDa.



Flow cytometry testing of fixed and permeabilized human U-251 cells with RPB2 antibody at 1ug/million cells (blocked with goat sera); Red=cells alone, Green=isotype control, Blue= RPB2 antibody.

Description

DNA-directed RNA polymerase II subunit RPB2 is an enzyme that in humans is encoded by the POLR2B gene. This gene encodes the second largest subunit of RNA polymerase II (Pol II), a DNA-dependent RNA polymerase that catalyzes the transcription of DNA into precursors of mRNA, snRNA and microRNA. This subunit and the largest subunit form opposite sides of the center cleft of Pol II. Deletion of the flap loop region of this subunit results in a decrease in the rate of transcriptional elongation. Alternative splicing results in multiple transcript variants.

Application Notes

Optimal dilution of the RPB2 antibody should be determined by the researcher.

Immunogen

An E.coli-derived human recombinant protein (E49-Q1145) was used as the immunogen for the RPB2 antibody.

Storage

After reconstitution, the RPB2 antibody can be stored for up to one month at 4oC. For long-term, aliquot and store at -20oC. Avoid repeated freezing and thawing.