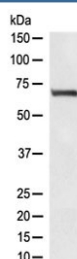


RPA70 Antibody / RPA1 [clone BB-18] (RQ4489)

Catalog No.	Formulation	Size
RQ4489	Antibody in PBS with 0.02% sodium azide, 50% glycerol and 0.4-0.5mg/ml BSA	100 ul

[Bulk quote request](#)

Availability	1-2 weeks
Species Reactivity	Human
Format	Purified
Clonality	Rabbit Monoclonal
Isotype	Rabbit IgG
Clone Name	BB-18
Purity	Protein A affinity
UniProt	P27694
Applications	Western Blot : 1:500-1:1000
Limitations	This RPA70 antibody is available for research use only.



Western blot testing of human HEK293 lyaste with RPA70 antibody at 0.5ug/ml.
Expected molecular weight ~70 kDa.

Description

As part of the heterotrimeric replication protein A complex (RPA/RP-A), binds and stabilizes single-stranded DNA intermediates, that form during DNA replication or upon DNA stress. It prevents their reannealing and in parallel, recruits and activates different proteins and complexes involved in DNA metabolism. Thereby, it plays an essential role both in DNA replication and the cellular response to DNA damage. In the cellular response to DNA damage, the RPA complex controls DNA repair and DNA damage checkpoint activation. Through recruitment of ATRIP activates the ATR kinase a master regulator of the DNA damage response. It is required for the recruitment of the DNA double-strand break repair factors RAD51 and RAD52 to chromatin in response to DNA damage. [UniProt]

Application Notes

Optimal dilution of the RPA70 antibody should be determined by the researcher.

Immunogen

A synthetic peptide from human RPA70 was used as the immunogen for the RPA70 antibody.

Storage

Store the RPA70 antibody at -20°C.