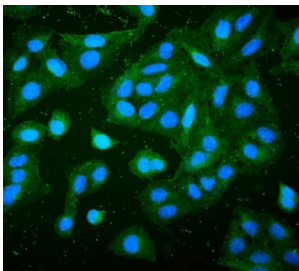


RP2 Antibody [clone 3D7] (RQ5552)

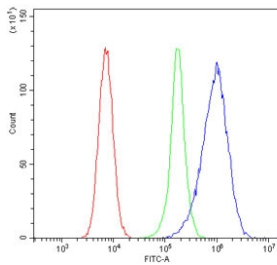
Catalog No.	Formulation	Size
RQ5552	0.5mg/ml if reconstituted with 0.2ml sterile DI water	100 ug

Bulk quote request

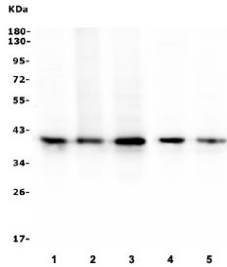
Availability	1-3 business days
Species Reactivity	Human
Format	Antigen affinity purified
Host	Mouse
Clonality	Monoclonal (mouse origin)
Isotype	Mouse IgG2b
Clone Name	3D7
Purity	Affinity purified
Buffer	Lyophilized from 1X PBS with 2% Trehalose and 0.025% sodium azide
UniProt	O75695
Applications	Western Blot : 0.5-1ug/ml Immunofluorescence : 2-4ug/ml Flow Cytometry : 1-3ug/million cells
Limitations	This RP2 antibody is available for research use only.



Immunofluorescent staining of FFPE human U-2 OS cells with RP2 antibody (green) and DAPI (blue). HIER: boil tissue sections in pH6, 10mM citrate buffer, for 20 min and allow to cool before testing.



Flow cytometry testing of human 293T cells with RP2 antibody at 1ug/million cells (blocked with goat sera); Red=cells alone, Green=isotype control, Blue= RP2 antibody.



Western blot testing of human 1) HepG2, 2) Jurkat, 3) Caco-2, 4) HeLa and 5) A549 cell lysate with RP2 antibody. Predicted molecular weight ~40 kDa.

Description

Protein XRP2 is a protein that in humans is encoded by the RP2 gene. It is mapped to Xp11.3. The RP2 locus has been implicated as one cause of X-linked retinitis pigmentosa. The predicted gene product shows homology with human cofactor C, a protein involved in the ultimate step of beta-tubulin folding. Progressive retinal degeneration may therefore be due to the accumulation of incorrectly folded photoreceptor or neuron-specific tubulin isoforms followed by progressive cell death. The RP2 protein is also involved in regulating the function and extension of outer segment of cone photoreceptors in mice.

Application Notes

Optimal dilution of the RP2 antibody should be determined by the researcher.

Immunogen

A human recombinant protein (amino acids D244-M348) was used as the immunogen for the RP2 antibody.

Storage

After reconstitution, the RP2 antibody can be stored for up to one month at 4°C. For long-term, aliquot and store at -20°C. Avoid repeated freezing and thawing.