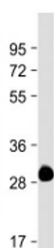


ROS1 Antibody [clone 1843CT776.78.21] (F54089)

Catalog No.	Formulation	Size
F54089-0.2ML	In 1X PBS, pH 7.4, with 0.09% sodium azide	0.2 ml
F54089-0.05ML	In 1X PBS, pH 7.4, with 0.09% sodium azide	0.05 ml

[Bulk quote request](#)

Availability	1-3 business days
Species Reactivity	Human
Format	Purified
Host	Mouse
Clonality	Monoclonal (mouse origin)
Isotype	Mouse IgG1, kappa
Clone Name	1843CT776.78.21
Purity	Protein G purified
UniProt	P08922
Applications	Western Blot : 1:4000
Limitations	This ROS1 antibody is available for research use only.



Western blot testing of ROS1 antibody at 1:4000 + partial recombinant protein. Predicted molecular weight ~264 kDa.

Description

Orphan receptor tyrosine kinase (RTK) that plays a role in epithelial cell differentiation and regionalization of the proximal epididymal epithelium. May activate several downstream signaling pathways related to cell differentiation, proliferation, growth and survival including the PI3 kinase-mTOR signaling pathway. Mediates the phosphorylation of PTPN11, an activator of this pathway. May also phosphorylate and activate the transcription factor STAT3 to control anchorage-independent cell growth. Mediates the phosphorylation and the activation of VAV3, a guanine nucleotide exchange factor

regulating cell morphology. May activate other downstream signaling proteins including AKT1, MAPK1, MAPK3, IRS1 and PLCG2. [UniProt]

Application Notes

The stated application concentrations are suggested starting points. Titration of the ROS1 antibody may be required due to differences in protocols and secondary/substrate sensitivity.

Immunogen

Recombinant human ROS1 was used as the immunogen for the ROS1 antibody.

Storage

Aliquot the ROS1 antibody and store frozen at -20oC or colder. Avoid repeated freeze-thaw cycles.