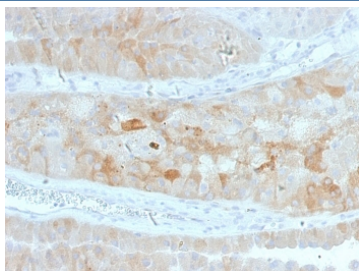


ROR2 Antibody [clone ROR2/1912] (V7987)

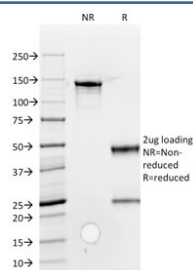
Catalog No.	Formulation	Size
V7987-100UG	0.2 mg/ml in 1X PBS with 0.1 mg/ml BSA (US sourced) and 0.05% sodium azide	100 ug
V7987-20UG	0.2 mg/ml in 1X PBS with 0.1 mg/ml BSA (US sourced) and 0.05% sodium azide	20 ug
V7987SAF-100UG	1 mg/ml in 1X PBS; BSA free, sodium azide free	100 ug

[Bulk quote request](#)

Availability	1-3 business days
Species Reactivity	Human
Format	Purified
Host	Mouse
Clonality	Monoclonal (mouse origin)
Isotype	Mouse IgG
Clone Name	ROR2/1912
Purity	Protein G affinity chromatography
UniProt	Q01974
Localization	Cell membrane, cytoplasm
Applications	Immunohistochemistry (FFPE) : 1-2ug/ml
Limitations	This ROR2 antibody is available for research use only.



IHC staining of FFPE human kidney with ROR2 antibody. HIER: boil tissue sections in pH 9 10mM Tris with 1mM EDTA for 20 min and allow to cool before testing.



SDS-PAGE analysis of purified, BSA-free ROR2 antibody as confirmation of integrity and purity.

Description

ROR2 (receptor tyrosine kinase-like orphan receptor 2), also known as neurotrophic tyrosine kinase receptor-related 2 (NTRKR2), is a single pass transmembrane tyrosine-protein kinase receptor. It contains a cytoplasmic tyrosine kinase domain, distally located serine-threonine-rich domains, an extracellular immunoglobulin-like domain, a cysteine-rich domain and a kringle domain. ROR2 is important for skeletal and endocrine development and is required for cartilage and growth plate development. It promotes the differentiation of osteoblasts and plays an important role in the early formation of chondrocytes. ROR2 sequesters and associates with Dlx1-1 affecting the transcriptional function of Msx-2. ROR2 also interacts with canonical Wnt-1 and Wnt-3, regulating their signaling pathways. Defects in ROR2 can result in the autosomal dominant skeletal disorder, brachydactyly type B1, or the autosomal recessive skeletal disorder, Robinow syndrome.

Application Notes

Optimal dilution of the ROR2 antibody should be determined by the researcher.

Immunogen

Cultured human keratinocytes were used as the immunogen for this ROR2 antibody.

Storage

Store the ROR2 antibody at 2-8°C (with azide) or aliquot and store at -20°C or colder (without azide).