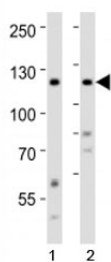


## Ror2 Antibody (F52853)

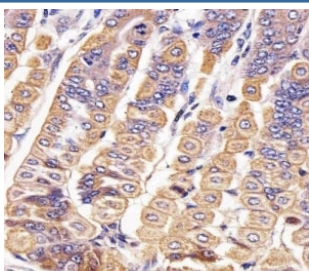
Catalog No.	Formulation	Size
F52853-0.4ML	In 1X PBS, pH 7.4, with 0.09% sodium azide	0.4 ml
F52853-0.08ML	In 1X PBS, pH 7.4, with 0.09% sodium azide	0.08 ml

[Bulk quote request](#)

<b>Availability</b>	1-3 business days
<b>Species Reactivity</b>	Human, Mouse
<b>Format</b>	Antigen affinity purified
<b>Clonality</b>	Polyclonal (rabbit origin)
<b>Isotype</b>	Rabbit Ig
<b>Purity</b>	Antigen affinity
<b>UniProt</b>	Q9Z138
<b>Applications</b>	IHC (Paraffin) : 1:25 Western Blot : 1:1000
<b>Limitations</b>	This Ror2 antibody is available for research use only.



Western blot analysis of lysate from 1) human HeLa and 2) human SH-SY5Y cell line using Ror2 antibody at 1:1000.



IHC analysis of FFPE mouse stomach section using Ror2 antibody; Ab was diluted at 1:25.

## Description

Tyrosine-protein kinase receptor which may be involved in the early formation of the chondrocytes. It seems to be required for cartilage and growth plate development. Phosphorylates YWHAB, leading to induction of osteogenesis and bone formation (By similarity).

## Application Notes

Titration of the Ror2 antibody may be required due to differences in protocols and secondary/substrate sensitivity.

## Immunogen

A portion of amino acids 750-800 from the mouse protein was used as the immunogen for this Ror2 antibody.

## Storage

Aliquot the Ror2 antibody and store frozen at -20oC or colder. Avoid repeated freeze-thaw cycles.