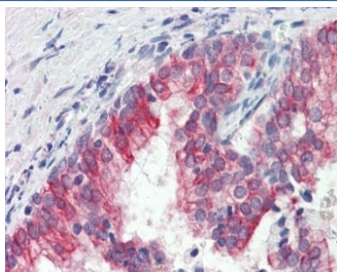


ROR1 Antibody (R34116)

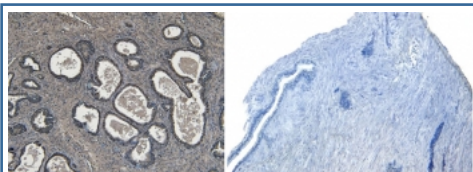
Catalog No.	Formulation	Size
R34116-100UG	0.5 mg/ml in 1X TBS, pH7.3, with 0.5% BSA (US sourced) and 0.02% sodium azide	100 ug

[Bulk quote request](#)

Availability	1-3 business days
Species Reactivity	Human
Predicted Reactivity	Mouse, Rat
Format	Antigen affinity purified
Host	Goat
Clonality	Polyclonal (goat origin)
Isotype	Goat Ig
Purity	Antigen affinity
Gene ID	4919
Applications	Immunohistochemistry (FFPE) : 3-6ug/ml ELISA (peptide) LOD : 1:16000
Limitations	This ROR1 antibody is available for research use only.



IHC testing of FFPE human prostate tissue with ROR1 antibody at 3ug/ml. Required HIER: steamed antigen retrieval with pH6 citrate buffer.



IHC testing of FFPE human prostate tissue with (left) and without (right) ROR1 antibody at 4ug/ml. Required HIER: steamed antigen retrieval with pH6 citrate buffer.

Description

Additional name(s) for this target protein: Receptor tyrosine kinase-like orphan receptor 1

Application Notes

Optimal dilution of the ROR1 antibody should be determined by the researcher.

1. This ROR1 antibody is specific for isoform 1 of the protein.

Immunogen

Amino acids GNKSQKPYKIDSKQA were used as the immunogen for this ROR1 antibody.

Storage

Aliquot and store the ROR1 antibody at -20oC.